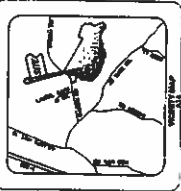


Moreland Atobelli Associates, Inc.
 Engineering • Planning • Landmarks Architecture • Land Acquisition • Surveying
 380 Downey Boulevard NE
 Lawrenceville, Georgia 30046
 Phone: (770) 962-4021 FAX: (770) 962-4023



Station	Right of Way	Center Line	Left of Way
1+00	100.00	100.00	100.00
1+10	110.00	110.00	110.00
1+20	120.00	120.00	120.00
1+30	130.00	130.00	130.00
1+40	140.00	140.00	140.00
1+50	150.00	150.00	150.00
1+60	160.00	160.00	160.00
1+70	170.00	170.00	170.00
1+80	180.00	180.00	180.00
1+90	190.00	190.00	190.00
2+00	200.00	200.00	200.00
2+10	210.00	210.00	210.00
2+20	220.00	220.00	220.00
2+30	230.00	230.00	230.00
2+40	240.00	240.00	240.00
2+50	250.00	250.00	250.00
2+60	260.00	260.00	260.00
2+70	270.00	270.00	270.00
2+80	280.00	280.00	280.00
2+90	290.00	290.00	290.00
3+00	300.00	300.00	300.00
3+10	310.00	310.00	310.00
3+20	320.00	320.00	320.00
3+30	330.00	330.00	330.00
3+40	340.00	340.00	340.00
3+50	350.00	350.00	350.00
3+60	360.00	360.00	360.00
3+70	370.00	370.00	370.00
3+80	380.00	380.00	380.00
3+90	390.00	390.00	390.00
4+00	400.00	400.00	400.00
4+10	410.00	410.00	410.00
4+20	420.00	420.00	420.00
4+30	430.00	430.00	430.00
4+40	440.00	440.00	440.00
4+50	450.00	450.00	450.00
4+60	460.00	460.00	460.00
4+70	470.00	470.00	470.00
4+80	480.00	480.00	480.00
4+90	490.00	490.00	490.00
5+00	500.00	500.00	500.00
5+10	510.00	510.00	510.00
5+20	520.00	520.00	520.00
5+30	530.00	530.00	530.00
5+40	540.00	540.00	540.00
5+50	550.00	550.00	550.00
5+60	560.00	560.00	560.00
5+70	570.00	570.00	570.00
5+80	580.00	580.00	580.00
5+90	590.00	590.00	590.00
6+00	600.00	600.00	600.00
6+10	610.00	610.00	610.00
6+20	620.00	620.00	620.00
6+30	630.00	630.00	630.00
6+40	640.00	640.00	640.00
6+50	650.00	650.00	650.00
6+60	660.00	660.00	660.00
6+70	670.00	670.00	670.00
6+80	680.00	680.00	680.00
6+90	690.00	690.00	690.00
7+00	700.00	700.00	700.00
7+10	710.00	710.00	710.00
7+20	720.00	720.00	720.00
7+30	730.00	730.00	730.00
7+40	740.00	740.00	740.00
7+50	750.00	750.00	750.00
7+60	760.00	760.00	760.00
7+70	770.00	770.00	770.00
7+80	780.00	780.00	780.00
7+90	790.00	790.00	790.00
8+00	800.00	800.00	800.00
8+10	810.00	810.00	810.00
8+20	820.00	820.00	820.00
8+30	830.00	830.00	830.00
8+40	840.00	840.00	840.00
8+50	850.00	850.00	850.00
8+60	860.00	860.00	860.00
8+70	870.00	870.00	870.00
8+80	880.00	880.00	880.00
8+90	890.00	890.00	890.00
9+00	900.00	900.00	900.00
9+10	910.00	910.00	910.00
9+20	920.00	920.00	920.00
9+30	930.00	930.00	930.00
9+40	940.00	940.00	940.00
9+50	950.00	950.00	950.00
9+60	960.00	960.00	960.00
9+70	970.00	970.00	970.00
9+80	980.00	980.00	980.00
9+90	990.00	990.00	990.00
10+00	1000.00	1000.00	1000.00

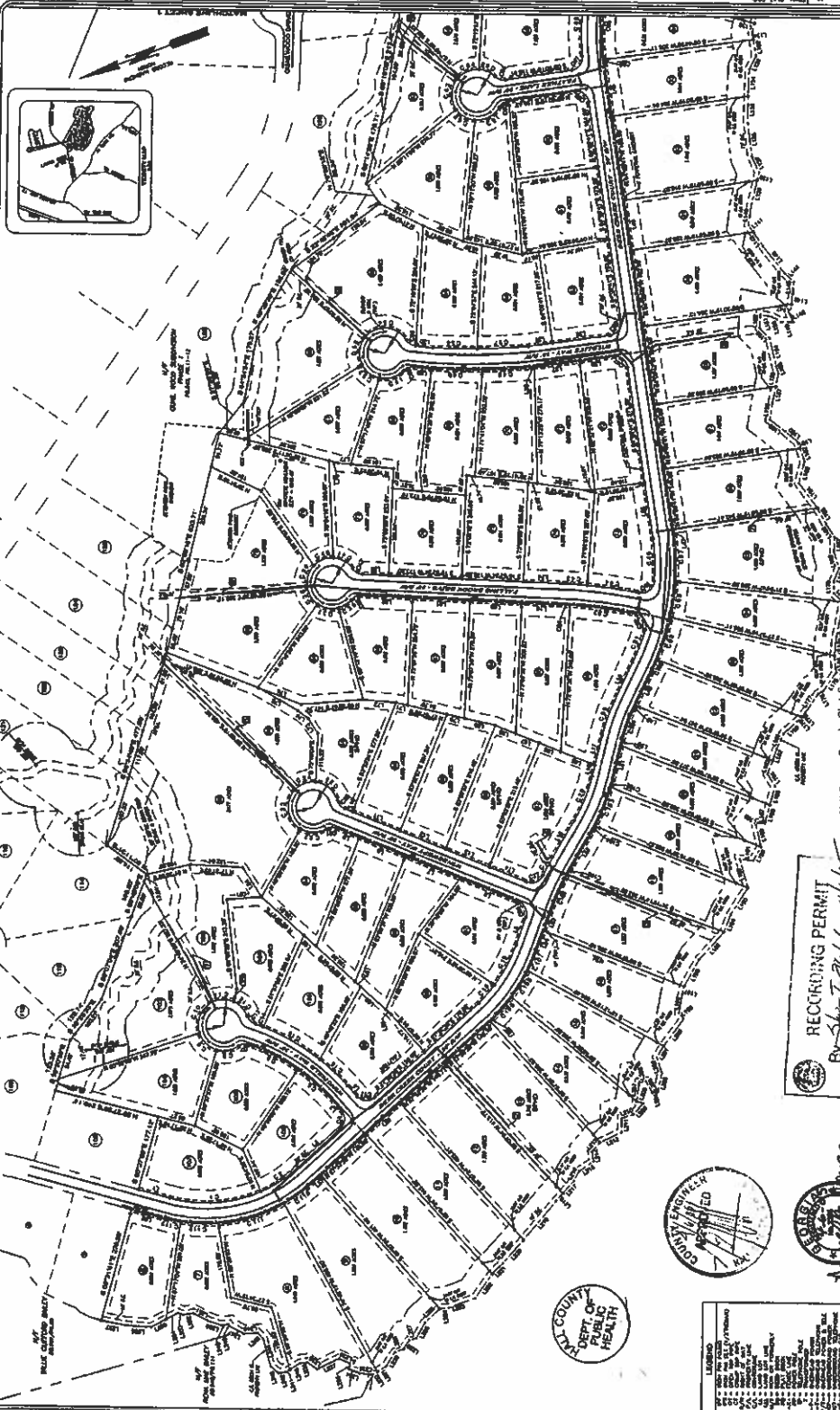
Station	Right of Way	Center Line	Left of Way
10+00	1000.00	1000.00	1000.00
10+10	1010.00	1010.00	1010.00
10+20	1020.00	1020.00	1020.00
10+30	1030.00	1030.00	1030.00
10+40	1040.00	1040.00	1040.00
10+50	1050.00	1050.00	1050.00
10+60	1060.00	1060.00	1060.00
10+70	1070.00	1070.00	1070.00
10+80	1080.00	1080.00	1080.00
10+90	1090.00	1090.00	1090.00
11+00	1100.00	1100.00	1100.00
11+10	1110.00	1110.00	1110.00
11+20	1120.00	1120.00	1120.00
11+30	1130.00	1130.00	1130.00
11+40	1140.00	1140.00	1140.00
11+50	1150.00	1150.00	1150.00
11+60	1160.00	1160.00	1160.00
11+70	1170.00	1170.00	1170.00
11+80	1180.00	1180.00	1180.00
11+90	1190.00	1190.00	1190.00
12+00	1200.00	1200.00	1200.00
12+10	1210.00	1210.00	1210.00
12+20	1220.00	1220.00	1220.00
12+30	1230.00	1230.00	1230.00
12+40	1240.00	1240.00	1240.00
12+50	1250.00	1250.00	1250.00
12+60	1260.00	1260.00	1260.00
12+70	1270.00	1270.00	1270.00
12+80	1280.00	1280.00	1280.00
12+90	1290.00	1290.00	1290.00
13+00	1300.00	1300.00	1300.00
13+10	1310.00	1310.00	1310.00
13+20	1320.00	1320.00	1320.00
13+30	1330.00	1330.00	1330.00
13+40	1340.00	1340.00	1340.00
13+50	1350.00	1350.00	1350.00
13+60	1360.00	1360.00	1360.00
13+70	1370.00	1370.00	1370.00
13+80	1380.00	1380.00	1380.00
13+90	1390.00	1390.00	1390.00
14+00	1400.00	1400.00	1400.00
14+10	1410.00	1410.00	1410.00
14+20	1420.00	1420.00	1420.00
14+30	1430.00	1430.00	1430.00
14+40	1440.00	1440.00	1440.00
14+50	1450.00	1450.00	1450.00
14+60	1460.00	1460.00	1460.00
14+70	1470.00	1470.00	1470.00
14+80	1480.00	1480.00	1480.00
14+90	1490.00	1490.00	1490.00
15+00	1500.00	1500.00	1500.00
15+10	1510.00	1510.00	1510.00
15+20	1520.00	1520.00	1520.00
15+30	1530.00	1530.00	1530.00
15+40	1540.00	1540.00	1540.00
15+50	1550.00	1550.00	1550.00
15+60	1560.00	1560.00	1560.00
15+70	1570.00	1570.00	1570.00
15+80	1580.00	1580.00	1580.00
15+90	1590.00	1590.00	1590.00
16+00	1600.00	1600.00	1600.00
16+10	1610.00	1610.00	1610.00
16+20	1620.00	1620.00	1620.00
16+30	1630.00	1630.00	1630.00
16+40	1640.00	1640.00	1640.00
16+50	1650.00	1650.00	1650.00
16+60	1660.00	1660.00	1660.00
16+70	1670.00	1670.00	1670.00
16+80	1680.00	1680.00	1680.00
16+90	1690.00	1690.00	1690.00
17+00	1700.00	1700.00	1700.00
17+10	1710.00	1710.00	1710.00
17+20	1720.00	1720.00	1720.00
17+30	1730.00	1730.00	1730.00
17+40	1740.00	1740.00	1740.00
17+50	1750.00	1750.00	1750.00
17+60	1760.00	1760.00	1760.00
17+70	1770.00	1770.00	1770.00
17+80	1780.00	1780.00	1780.00
17+90	1790.00	1790.00	1790.00
18+00	1800.00	1800.00	1800.00
18+10	1810.00	1810.00	1810.00
18+20	1820.00	1820.00	1820.00
18+30	1830.00	1830.00	1830.00
18+40	1840.00	1840.00	1840.00
18+50	1850.00	1850.00	1850.00
18+60	1860.00	1860.00	1860.00
18+70	1870.00	1870.00	1870.00
18+80	1880.00	1880.00	1880.00
18+90	1890.00	1890.00	1890.00
19+00	1900.00	1900.00	1900.00
19+10	1910.00	1910.00	1910.00
19+20	1920.00	1920.00	1920.00
19+30	1930.00	1930.00	1930.00
19+40	1940.00	1940.00	1940.00
19+50	1950.00	1950.00	1950.00
19+60	1960.00	1960.00	1960.00
19+70	1970.00	1970.00	1970.00
19+80	1980.00	1980.00	1980.00
19+90	1990.00	1990.00	1990.00
20+00	2000.00	2000.00	2000.00

Station	Right of Way	Center Line	Left of Way
20+00	2000.00	2000.00	2000.00
20+10	2010.00	2010.00	2010.00
20+20	2020.00	2020.00	2020.00
20+30	2030.00	2030.00	2030.00
20+40	2040.00	2040.00	2040.00
20+50	2050.00	2050.00	2050.00
20+60	2060.00	2060.00	2060.00
20+70	2070.00	2070.00	2070.00
20+80	2080.00	2080.00	2080.00
20+90	2090.00	2090.00	2090.00
21+00	2100.00	2100.00	2100.00
21+10	2110.00	2110.00	2110.00
21+20	2120.00	2120.00	2120.00
21+30	2130.00	2130.00	2130.00
21+40	2140.00	2140.00	2140.00
21+50	2150.00	2150.00	2150.00
21+60	2160.00	2160.00	2160.00
21+70	2170.00	2170.00	2170.00
21+80	2180.00	2180.00	2180.00
21+90	2190.00	2190.00	2190.00
22+00	2200.00	2200.00	2200.00
22+10	2210.00	2210.00	2210.00
22+20	2220.00	2220.00	2220.00
22+30	2230.00	2230.00	2230.00
22+40	2240.00	2240.00	2240.00
22+50	2250.00	2250.00	2250.00
22+60	2260.00	2260.00	2260.00
22+70	2270.00	2270.00	2270.00
22+80	2280.00	2280.00	2280.00
22+90	2290.00	2290.00	2290.00
23+00	2300.00	2300.00	2300.00
23+10	2310.00	2310.00	2310.00
23+20	2320.00	2320.00	2320.00
23+30	2330.00	2330.00	2330.00
23+40	2340.00	2340.00	2340.00
23+50	2350.00	2350.00	2350.00
23+60	2360.00	2360.00	2360.00
23+70	2370.00	2370.00	2370.00
23+80	2380.00	2380.00	2380.00
23+90	2390.00	2390.00	2390.00
24+00	2400.00	2400.00	2400.00
24+10	2410.00	2410.00	2410.00
24+20	2420.00	2420.00	2420.00
24+30	2430.00	2430.00	2430.00
24+40	2440.00	2440.00	2440.00
24+50	2450.00	2450.00	2450.00
24+60	2460.00	2460.00	2460.00
24+70	2470.00	2470.00	2470.



GAUL WOOD SUBDIVISION
PHASE 2
D.M.D. 1270
HALL COUNTY, GEORGIA

SHEET 7
 of
 7 SHEETS



THIS PLAN HAS BEEN PREPARED BY MORELAND ALTABELLI ASSOCIATES, INC. FOR THE PURPOSE OF RECORDING IN THE PUBLIC RECORDS OF HALL COUNTY, GEORGIA. THE PREPARED BY HAS CONDUCTED A SURVEY OF THE PROPERTY AND HAS FOUND THAT THE PROPERTY IS CAPABLE OF BEING SUBDIVIDED INTO THE LOTS AND EASEMENTS SHOWN ON THIS PLAN. THE PREPARED BY HAS CONDUCTED A SURVEY OF THE PROPERTY AND HAS FOUND THAT THE PROPERTY IS CAPABLE OF BEING SUBDIVIDED INTO THE LOTS AND EASEMENTS SHOWN ON THIS PLAN. THE PREPARED BY HAS CONDUCTED A SURVEY OF THE PROPERTY AND HAS FOUND THAT THE PROPERTY IS CAPABLE OF BEING SUBDIVIDED INTO THE LOTS AND EASEMENTS SHOWN ON THIS PLAN.

STATE & LOCAL COMMISSIONS FOR ADVANCED FEES

Agency	Fee Type	Amount
Hall County	Recording Fee	\$100.00
Hall County	Planning Commission	\$100.00
Hall County	Health Department	\$100.00
Hall County	Public Works	\$100.00
Hall County	Other	\$100.00
City of Marietta	Recording Fee	\$100.00
City of Marietta	Planning Commission	\$100.00
City of Marietta	Health Department	\$100.00
City of Marietta	Public Works	\$100.00
City of Marietta	Other	\$100.00

Hall County, Georgia, Clerk of Superior Court
 Filed in office this 12th day of April, 2006.
 Book 1270, Page 1270

RECORDING PERMIT
 By *Shirley J. Altabelli* 4/6/06
 HALL COUNTY PLANNING COMMISSION



LEGEND

1	Lot Lines
2	Proposed Lot Lines
3	Proposed Street Right-of-Way
4	Proposed Easement
5	Proposed Utility Easement
6	Proposed Water Easement
7	Proposed Sewer Easement
8	Proposed Gas Easement
9	Proposed Electric Easement
10	Proposed Telephone Easement
11	Proposed Cable Easement
12	Proposed Other Easement
13	Proposed Other

Moreland Attebell Associates, Inc.
 Engineering Planning Land Acquisitions Land Acquisition Services
 280 Gateway Boulevard SE
 Chamblee, Georgia 30359
 PHONE: (770) 488-4831 FAX: (770) 488-4833

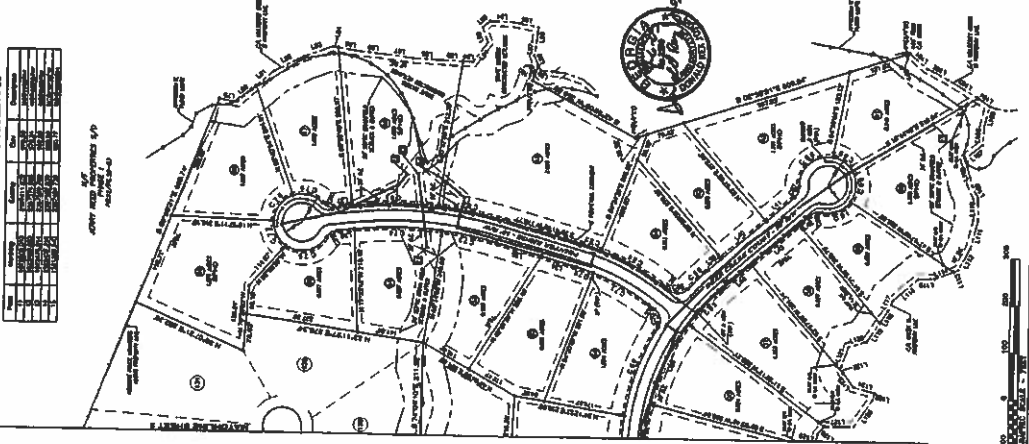


QUAIL WOOD SUBDIVISION
 G.M.D. 1270
 HALL COUNTY, GEORGIA

7 SHEETS
 SHEET 2
 OF

THIS PLAT IS A PART OF A LARGER PLAT OF LAND IN THE QUAIL WOOD SUBDIVISION, G.M.D. 1270, HALL COUNTY, GEORGIA, AND IS SUBJECT TO THE TERMS AND CONDITIONS OF THE DEED OF CONVEYANCE THEREFOR. THIS PLAT IS A PART OF A LARGER PLAT OF LAND IN THE QUAIL WOOD SUBDIVISION, G.M.D. 1270, HALL COUNTY, GEORGIA, AND IS SUBJECT TO THE TERMS AND CONDITIONS OF THE DEED OF CONVEYANCE THEREFOR.

Block	Area	Acres	Owner	Remarks
1	0.12	0.12
2	0.12	0.12
3	0.12	0.12
4	0.12	0.12
5	0.12	0.12
6	0.12	0.12
7	0.12	0.12
8	0.12	0.12
9	0.12	0.12
10	0.12	0.12
11	0.12	0.12
12	0.12	0.12
13	0.12	0.12
14	0.12	0.12
15	0.12	0.12
16	0.12	0.12
17	0.12	0.12
18	0.12	0.12
19	0.12	0.12
20	0.12	0.12
21	0.12	0.12
22	0.12	0.12
23	0.12	0.12
24	0.12	0.12
25	0.12	0.12
26	0.12	0.12
27	0.12	0.12
28	0.12	0.12
29	0.12	0.12
30	0.12	0.12
31	0.12	0.12
32	0.12	0.12
33	0.12	0.12
34	0.12	0.12
35	0.12	0.12
36	0.12	0.12
37	0.12	0.12
38	0.12	0.12
39	0.12	0.12
40	0.12	0.12
41	0.12	0.12
42	0.12	0.12
43	0.12	0.12
44	0.12	0.12
45	0.12	0.12
46	0.12	0.12
47	0.12	0.12
48	0.12	0.12
49	0.12	0.12
50	0.12	0.12
51	0.12	0.12
52	0.12	0.12
53	0.12	0.12
54	0.12	0.12
55	0.12	0.12
56	0.12	0.12
57	0.12	0.12
58	0.12	0.12
59	0.12	0.12
60	0.12	0.12
61	0.12	0.12
62	0.12	0.12
63	0.12	0.12
64	0.12	0.12
65	0.12	0.12
66	0.12	0.12
67	0.12	0.12
68	0.12	0.12
69	0.12	0.12
70	0.12	0.12
71	0.12	0.12
72	0.12	0.12
73	0.12	0.12
74	0.12	0.12
75	0.12	0.12
76	0.12	0.12
77	0.12	0.12
78	0.12	0.12
79	0.12	0.12
80	0.12	0.12
81	0.12	0.12
82	0.12	0.12
83	0.12	0.12
84	0.12	0.12
85	0.12	0.12
86	0.12	0.12
87	0.12	0.12
88	0.12	0.12
89	0.12	0.12
90	0.12	0.12
91	0.12	0.12
92	0.12	0.12
93	0.12	0.12
94	0.12	0.12
95	0.12	0.12
96	0.12	0.12
97	0.12	0.12
98	0.12	0.12
99	0.12	0.12
100	0.12	0.12



RECORDING PER...
 HALL COUNTY PLANNING COMMISSION
 2015...
 Hall County, Georgia, Clerk Superior Court
 2015...
 Book 1270...
 Page 1270...
 Dugan S. Wood, Clerk

STATE PLANK COORDINATES FOR DAMAGE FEES

Block	Area	Acres	Owner	Remarks
1	0.12	0.12
2	0.12	0.12
3	0.12	0.12
4	0.12	0.12
5	0.12	0.12
6	0.12	0.12
7	0.12	0.12
8	0.12	0.12
9	0.12	0.12
10	0.12	0.12
11	0.12	0.12
12	0.12	0.12
13	0.12	0.12
14	0.12	0.12
15	0.12	0.12
16	0.12	0.12
17	0.12	0.12
18	0.12	0.12
19	0.12	0.12
20	0.12	0.12
21	0.12	0.12
22	0.12	0.12
23	0.12	0.12
24	0.12	0.12
25	0.12	0.12
26	0.12	0.12
27	0.12	0.12
28	0.12	0.12
29	0.12	0.12
30	0.12	0.12
31	0.12	0.12
32	0.12	0.12
33	0.12	0.12
34	0.12	0.12
35	0.12	0.12
36	0.12	0.12
37	0.12	0.12
38	0.12	0.12
39	0.12	0.12
40	0.12	0.12
41	0.12	0.12
42	0.12	0.12
43	0.12	0.12
44	0.12	0.12
45	0.12	0.12
46	0.12	0.12
47	0.12	0.12
48	0.12	0.12
49	0.12	0.12
50	0.12	0.12
51	0.12	0.12
52	0.12	0.12
53	0.12	0.12
54	0.12	0.12
55	0.12	0.12
56	0.12	0.12
57	0.12	0.12
58	0.12	0.12
59	0.12	0.12
60	0.12	0.12
61	0.12	0.12
62	0.12	0.12
63	0.12	0.12
64	0.12	0.12
65	0.12	0.12
66	0.12	0.12
67	0.12	0.12
68	0.12	0.12
69	0.12	0.12
70	0.12	0.12
71	0.12	0.12
72	0.12	0.12
73	0.12	0.12
74	0.12	0.12
75	0.12	0.12
76	0.12	0.12
77	0.12	0.12
78	0.12	0.12
79	0.12	0.12
80	0.12	0.12
81	0.12	0.12
82	0.12	0.12
83	0.12	0.12
84	0.12	0.12
85	0.12	0.12
86	0.12	0.12
87	0.12	0.12
88	0.12	0.12
89	0.12	0.12
90	0.12	0.12
91	0.12	0.12
92	0.12	0.12
93	0.12	0.12
94	0.12	0.12
95	0.12	0.12
96	0.12	0.12
97	0.12	0.12
98	0.12	0.12
99	0.12	0.12
100	0.12	0.12

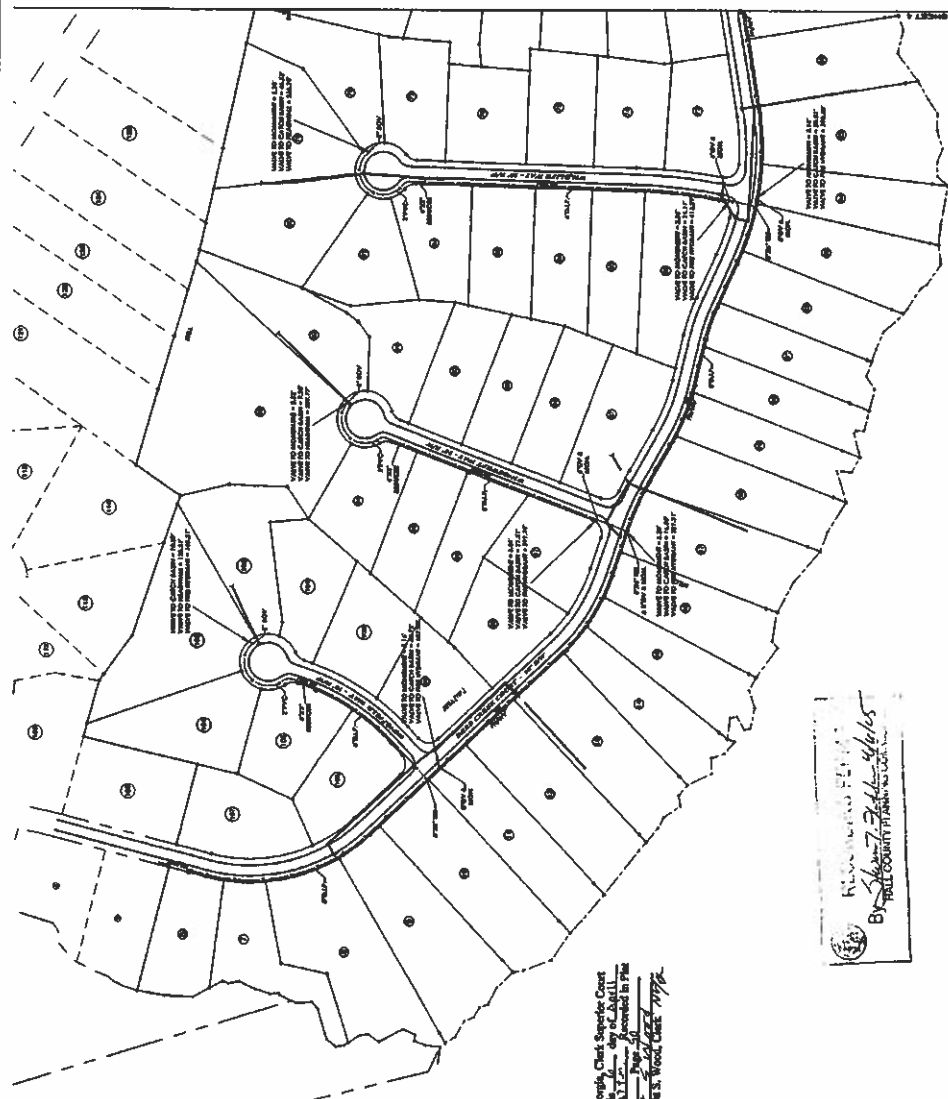
Moreland Attebell Associates, Inc.
 Engineering • Planning • Landscaping Architecture • Land Acquisition • Surveying
 200 Dunwoody Meadows NE
 Dunwoody, Georgia 30088
 PHONE (770) 253-4001 FAX (770) 253-4003



QUAIL WOOD SUBDIVISION
PHASE 2
 G.M.D. 1278
 HALL COUNTY, GEORGIA

SHEET 6
 OF
 7 SHEETS

THIS PLAN WAS PREPARED IN CONFORMANCE WITH THE
 REQUIREMENTS OF THE GEORGIA SUBDIVISION ACT AND THE
 REGULATIONS OF THE GEORGIA SURVEYORS BOARD.
 THE PLAN WAS PREPARED IN CONFORMANCE WITH THE
 REQUIREMENTS OF THE GEORGIA SUBDIVISION ACT AND THE
 REGULATIONS OF THE GEORGIA SURVEYORS BOARD.
 THE PLAN WAS PREPARED IN CONFORMANCE WITH THE
 REQUIREMENTS OF THE GEORGIA SUBDIVISION ACT AND THE
 REGULATIONS OF THE GEORGIA SURVEYS BOARD.



REVISIONS
 BY: [Signature]
 DATE: 11/15/05

Hall County, Georgia, Clerk Superior Court
 filed in office this 7th day of April
 2005. At [Location].
 [Signature]
 Clerk Superior Court



NO.	DESCRIPTION
1	...
2	...
3	...
4	...
5	...
6	...
7	...
8	...
9	...
10	...
11	...
12	...
13	...
14	...
15	...
16	...
17	...
18	...
19	...
20	...
21	...
22	...
23	...
24	...
25	...
26	...
27	...
28	...
29	...
30	...
31	...
32	...
33	...
34	...
35	...
36	...
37	...
38	...
39	...
40	...
41	...
42	...
43	...
44	...
45	...
46	...
47	...
48	...
49	...
50	...



Moreland Anshel Associates, Inc.
 Engineering • Planning • Landscape Architecture • Land Acquisition • Surveying
 2800 Bessie Coleman Blvd
 Atlanta, Georgia 30305
 PHONE: (770) 252-4001 FAX: (770) 252-4003

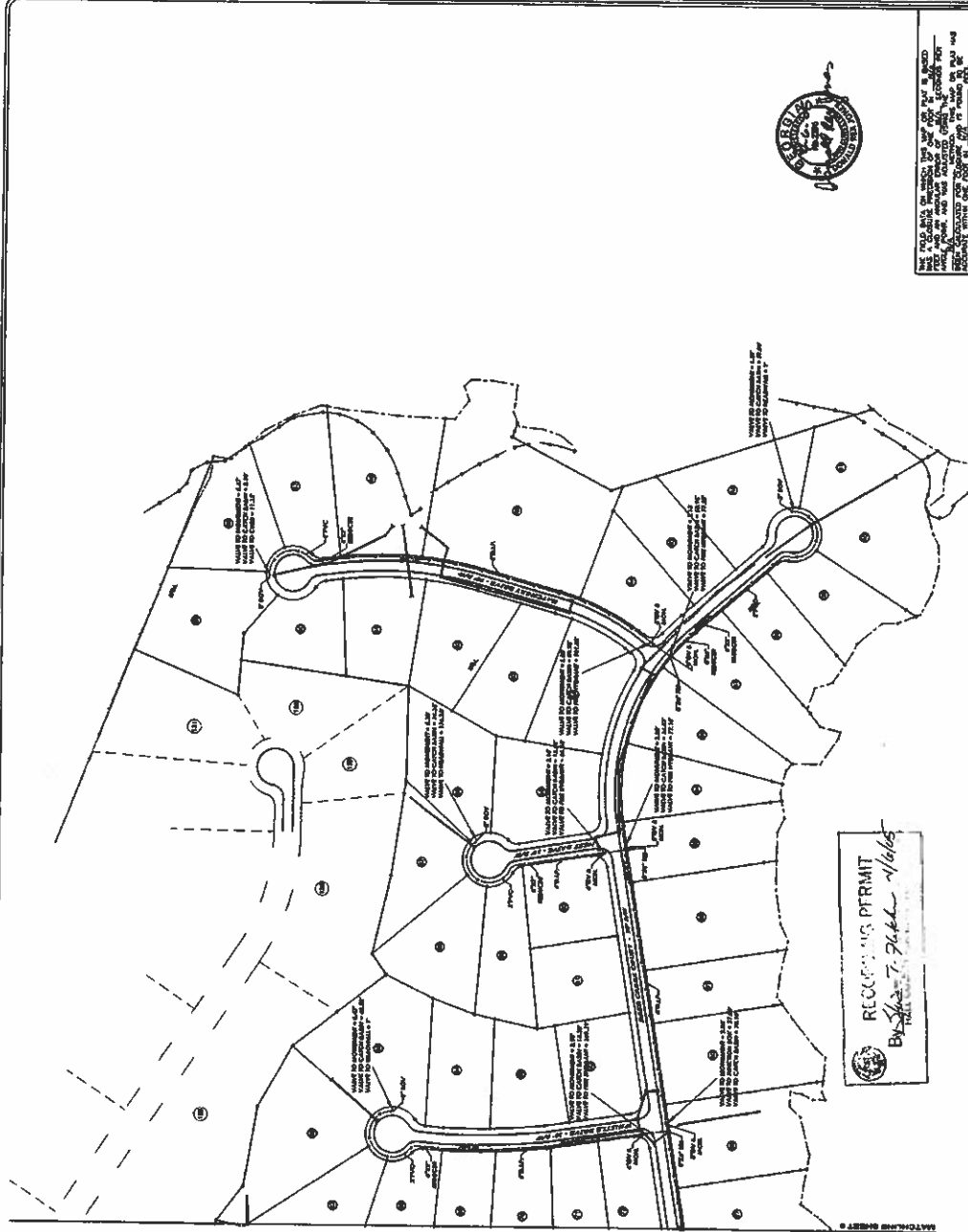


QUAIL WOOD SUBDIVISION
 PHASE 2
 G.M.D. 1270
 HALL COUNTY, GEORGIA

SHEET 7
 of
 7 SHEETS



THE FIELD DATA ON WHICH THIS PLAN IS BASED
 WAS OBTAINED BY MEASUREMENTS MADE BY
 THE SURVEYOR AND BY AERIAL PHOTOGRAPHY
 AND BY REFERENCE TO THE RECORDS OF THE
 SURVEYOR. THE SURVEYOR HAS NOT BEEN
 ADVISED OF ANY CHANGES IN THE
 POSITION OF ANY OF THE POINTS OR
 OF ANY OTHER FACTS WHICH MIGHT
 AFFECT THE ACCURACY OF THIS PLAN.
 THIS PLAN WAS PREPARED IN COMPLIANCE WITH THE
 REQUIREMENTS OF THE GEORGIA SURVEYING
 BOARD, UNDER THE PROVISIONS OF CHAPTER 103-203
 OF THE CODE OF GEORGIA.



RECORDING PERMIT
 BY 2024-7-26-11-1616

Hall County Georgia, Clerk Superior Court
 Filed in office this 26th day of July 2024.
 Book 2024-7-26-11-1616, Page 5
 Elizabeth S. Wood, Clerk

SYMBOL	DESCRIPTION
(Symbol)	1.00' PLANNED
(Symbol)	2.00' PLANNED
(Symbol)	3.00' PLANNED
(Symbol)	4.00' PLANNED
(Symbol)	5.00' PLANNED
(Symbol)	6.00' PLANNED
(Symbol)	7.00' PLANNED
(Symbol)	8.00' PLANNED
(Symbol)	9.00' PLANNED
(Symbol)	10.00' PLANNED
(Symbol)	11.00' PLANNED
(Symbol)	12.00' PLANNED
(Symbol)	13.00' PLANNED
(Symbol)	14.00' PLANNED
(Symbol)	15.00' PLANNED
(Symbol)	16.00' PLANNED
(Symbol)	17.00' PLANNED
(Symbol)	18.00' PLANNED
(Symbol)	19.00' PLANNED
(Symbol)	20.00' PLANNED
(Symbol)	21.00' PLANNED
(Symbol)	22.00' PLANNED
(Symbol)	23.00' PLANNED
(Symbol)	24.00' PLANNED
(Symbol)	25.00' PLANNED
(Symbol)	26.00' PLANNED
(Symbol)	27.00' PLANNED
(Symbol)	28.00' PLANNED
(Symbol)	29.00' PLANNED
(Symbol)	30.00' PLANNED
(Symbol)	31.00' PLANNED
(Symbol)	32.00' PLANNED
(Symbol)	33.00' PLANNED
(Symbol)	34.00' PLANNED
(Symbol)	35.00' PLANNED
(Symbol)	36.00' PLANNED
(Symbol)	37.00' PLANNED
(Symbol)	38.00' PLANNED
(Symbol)	39.00' PLANNED
(Symbol)	40.00' PLANNED
(Symbol)	41.00' PLANNED
(Symbol)	42.00' PLANNED
(Symbol)	43.00' PLANNED
(Symbol)	44.00' PLANNED
(Symbol)	45.00' PLANNED
(Symbol)	46.00' PLANNED
(Symbol)	47.00' PLANNED
(Symbol)	48.00' PLANNED
(Symbol)	49.00' PLANNED
(Symbol)	50.00' PLANNED
(Symbol)	51.00' PLANNED
(Symbol)	52.00' PLANNED
(Symbol)	53.00' PLANNED
(Symbol)	54.00' PLANNED
(Symbol)	55.00' PLANNED
(Symbol)	56.00' PLANNED
(Symbol)	57.00' PLANNED
(Symbol)	58.00' PLANNED
(Symbol)	59.00' PLANNED
(Symbol)	60.00' PLANNED
(Symbol)	61.00' PLANNED
(Symbol)	62.00' PLANNED
(Symbol)	63.00' PLANNED
(Symbol)	64.00' PLANNED
(Symbol)	65.00' PLANNED
(Symbol)	66.00' PLANNED
(Symbol)	67.00' PLANNED
(Symbol)	68.00' PLANNED
(Symbol)	69.00' PLANNED
(Symbol)	70.00' PLANNED
(Symbol)	71.00' PLANNED
(Symbol)	72.00' PLANNED
(Symbol)	73.00' PLANNED
(Symbol)	74.00' PLANNED
(Symbol)	75.00' PLANNED
(Symbol)	76.00' PLANNED
(Symbol)	77.00' PLANNED
(Symbol)	78.00' PLANNED
(Symbol)	79.00' PLANNED
(Symbol)	80.00' PLANNED
(Symbol)	81.00' PLANNED
(Symbol)	82.00' PLANNED
(Symbol)	83.00' PLANNED
(Symbol)	84.00' PLANNED
(Symbol)	85.00' PLANNED
(Symbol)	86.00' PLANNED
(Symbol)	87.00' PLANNED
(Symbol)	88.00' PLANNED
(Symbol)	89.00' PLANNED
(Symbol)	90.00' PLANNED
(Symbol)	91.00' PLANNED
(Symbol)	92.00' PLANNED
(Symbol)	93.00' PLANNED
(Symbol)	94.00' PLANNED
(Symbol)	95.00' PLANNED
(Symbol)	96.00' PLANNED
(Symbol)	97.00' PLANNED
(Symbol)	98.00' PLANNED
(Symbol)	99.00' PLANNED
(Symbol)	100.00' PLANNED