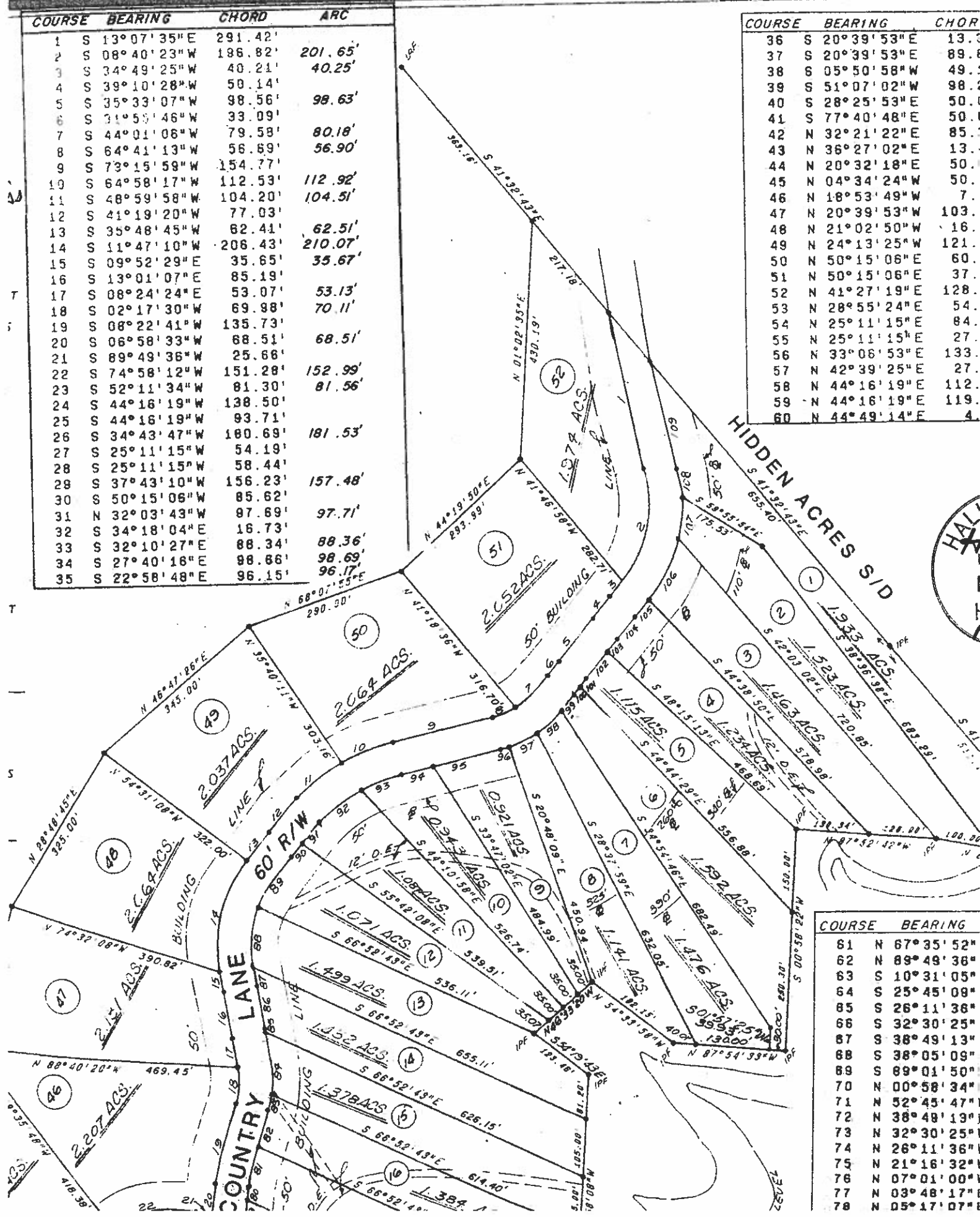


COURSE	BEARING	CHORD	ARC
1	S 13° 07' 35" E	291.42'	
2	S 08° 40' 23" W	196.82'	201.65'
3	S 34° 49' 25" W	40.21'	40.25'
4	S 39° 10' 28" W	50.14'	
5	S 35° 33' 07" W	98.56'	98.63'
6	S 31° 55' 46" W	33.09'	
7	S 44° 01' 06" W	79.58'	80.18'
8	S 64° 41' 13" W	56.69'	56.90'
9	S 73° 15' 58" W	154.77'	
10	S 64° 58' 17" W	112.53'	112.92'
11	S 48° 59' 58" W	104.20'	104.51'
12	S 41° 19' 20" W	77.03'	
13	S 35° 48' 45" W	82.41'	62.51'
14	S 11° 47' 10" W	208.43'	210.07'
15	S 09° 52' 29" E	35.65'	35.67'
16	S 13° 01' 07" E	85.19'	
17	S 08° 24' 24" E	53.07'	53.13'
18	S 02° 17' 30" W	69.98'	70.11'
19	S 08° 22' 41" W	135.73'	
20	S 06° 58' 33" W	68.51'	68.51'
21	S 89° 49' 36" W	25.66'	
22	S 74° 58' 12" W	151.28'	152.99'
23	S 52° 11' 34" W	81.30'	81.56'
24	S 44° 16' 19" W	138.50'	
25	S 44° 16' 19" W	93.71'	
26	S 34° 43' 47" W	160.69'	181.53'
27	S 25° 11' 15" W	54.19'	
28	S 25° 11' 15" W	58.44'	
28	S 37° 43' 10" W	156.23'	157.48'
30	S 50° 15' 06" W	85.62'	
31	N 32° 03' 43" W	87.69'	97.71'
32	S 34° 18' 04" E	16.73'	
33	S 32° 10' 27" E	88.34'	88.36'
34	S 27° 40' 16" E	98.66'	98.69'
35	S 22° 58' 48" E	96.15'	96.17'

COURSE	BEARING	CHORD
36	S 20° 39' 53" E	13.3
37	S 20° 39' 53" E	89.8
38	S 05° 50' 58" W	49.1
39	S 51° 07' 02" W	98.1
40	S 28° 25' 53" E	50.1
41	S 77° 40' 48" E	50.1
42	N 32° 21' 22" E	85.1
43	N 36° 27' 02" E	13.1
44	N 20° 32' 18" E	50.1
45	N 04° 34' 24" W	50.1
46	N 18° 53' 49" W	7.1
47	N 20° 39' 53" W	103.1
48	N 21° 02' 50" W	16.1
49	N 24° 13' 25" W	121.1
50	N 50° 15' 06" E	60.1
51	N 50° 15' 06" E	37.1
52	N 41° 27' 19" E	128.1
53	N 28° 55' 24" E	54.1
54	N 25° 11' 15" E	84.1
55	N 25° 11' 15" E	27.1
56	N 33° 06' 53" E	133.1
57	N 42° 39' 25" E	27.1
58	N 44° 16' 19" E	112.1
59	N 44° 16' 19" E	119.1
60	N 44° 49' 14" E	4.1



COURSE	BEARING
61	N 67° 35' 52" W
62	N 89° 49' 36" W
63	S 10° 31' 05" E
64	S 25° 45' 08" E
65	S 26° 11' 36" E
66	S 32° 30' 25" E
67	S 38° 49' 13" E
68	S 38° 05' 09" E
69	S 89° 01' 50" E
70	N 00° 58' 34" W
71	N 52° 45' 47" W
72	N 38° 48' 19" W
73	N 32° 30' 25" W
74	N 26° 11' 36" W
75	N 21° 16' 32" W
76	N 07° 01' 00" W
77	N 03° 48' 17" W
78	N 05° 17' 07" W