

# FOR SALE

## ADJACENT LAKE LOTS COUNTRY LANE GAINESVILLE, HALL COUNTY



\* Property Lines drawn on above aerial are not guaranteed.

### 2 ADJACENT LAKE LOTS WITH 2 BOAT DOCKS

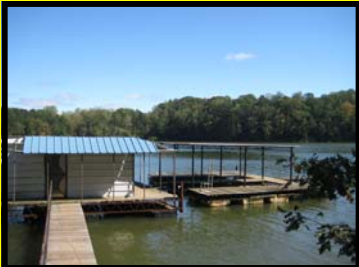
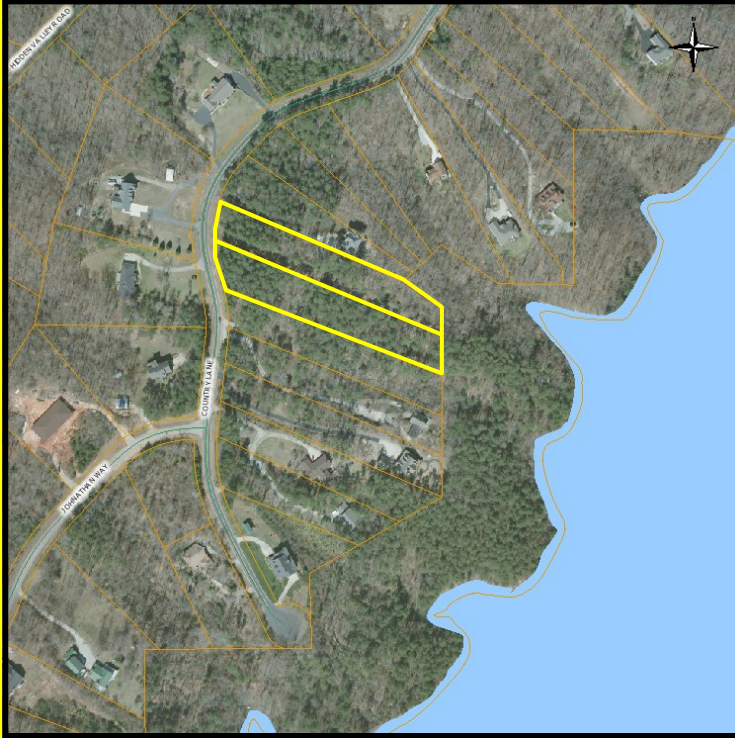
- 1.5+/- ACRE & 1.432+/- ACRE LOTS LOCATED ON LAKE LANIER
- AVAILABLE TOGETHER OR AS SEPARATE TRACTS
- LOCATED JUST OFF CLARKS BRIDGE ROAD IN SECLUDED SETTING
- NORTH HALL SCHOOLS, ZONED AR-III.
- TOTAL OF 310+/- FEET OF SHORELINE WITH 2 BOAT DOCK PERMITS
- **BRING ALL OFFERS! ASKING \$299,000 EACH or \$550,000 FOR BOTH!**



THE POWER TO PERFORM  
[www.nortoncommercial.com](http://www.nortoncommercial.com)

The Norton Agency  
Commercial Group  
434 Green Street  
Gainesville, GA 30501  
770.297.4800

Stephen Lovett  
770.297.4807  
[slovett@nortoncommercial.com](mailto:slovett@nortoncommercial.com)



**THE POWER TO PERFORM**  
[www.nortoncommercial.com](http://www.nortoncommercial.com)

**The Norton Agency  
 Commercial Group  
 434 Green Street  
 Gainesville, GA 30501  
 770.297.4800**

**Stephen Lovett  
 770-297-4807  
[slovett@nortoncommercial.com](mailto:slovett@nortoncommercial.com)**