

DH-HOLDS

PLEASE NOTE THAT A CERTIFICATE OF OCCUPANCY HOLD MAY BE PLACED ON YOUR BUILDING PERMIT TO VERIFY THAT YOU HAVE COMPLETED THE WORK SUBMITTED WITH THIS PLAN. A SITE INSPECTION MAY BE REQUIRED.

DH-A

SITE PLAN IS REQUIRED SHOWING BUILDING AND DRIVEWAY LOCATIONS WITH DIMENSIONS OF THE LOT, SIDEWALK, CURB, STREETS AND PUBLIC INFRASTRUCTURE.

DH-B

SITE PLAN REQUIRED SHOWING EXISTING AND PROPOSED UTILITIES WITH DIMENSIONS. A REGISTERED LICENSED PROFESSIONAL ENGINEER, LICENSED LANDSCAPE ARCHITECT OR REGISTERED SURVEYOR MUST SIGN AND SEAL THE PLAN.

DH-C

THIS PLAN IS REQUIRED SHOWING MANHOLE FINISHED FLOOR ELEVATION, SEE ELEVATION AND CONTOUR LINES 25 AND 100 YEAR FLOOD ELEVATIONS OF THE DETENTION FACILITY FOR ALL AREAS AS SHOWN ABOVE. A FINAL ELEVATION CERTIFICATE MUST BE COMPLETED BY THE PROPERTY OWNER OR REPRESENTATIVE AND SUBMITTED TO THE COUNTY ENGINEER FOR REVIEW. THIS PLAN IS SUBJECT TO THE COUNTY ENGINEER'S REVIEW AND APPROVAL OF THE BUILDING.

DH-D

ONLY THE DIRECTOR OR THE SPECIAL APPOINTEE REPRESENTING THE DIRECTOR MAY RELEASE THIS TYPE OF HOLD. A DH-D HOLD IS A GENERAL HOLD FOR A SPECIFIC PROJECT NOT PREVIOUSLY COVERED BY THE PRECEDING EXPLANATION ABOVE.

FULTON COUNTY HEALTH DEPARTMENT
THIS SUBDIVISION AS SHOWN IS APPROVED UNDER THE CONDITION THAT THE PROPOSED BUILDING AND DRIVEWAY SHALL BE CONSTRUCTED IN ACCORDANCE WITH THE REQUIREMENTS BELOW.

WATER SUPPLY

PUBLIC WATER SUPPLY

PRIVATE WATER SUPPLY

SEWER REQUIREMENTS - 6/0 TYPE

TYPE "A"

TYPE "B"

TYPE "C"

TYPE "D"

PUBLIC SEWER

PRIVATE ON-SITE SEWER

SEWER REQUIREMENTS - 6/0 TYPE

TYPE "A"

TYPE "B"

TYPE "C"

TYPE "D"

OWNER: **3/1/05**

DATE: **3/1/05**

FULTON COUNTY HEALTH DEPT

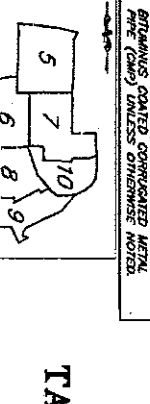
REVISION DATE: FULTON COUNTY HEALTH DEPT

ABBREVIATIONS LEGEND

ADBRG	DETENTION
D.E.	DRAINAGE EASEMENT
S.S.E.	SEWARIARY SEWER EASEMENT
A.E.	ACCESS EASEMENT
W.L.E.	WATER LINE EASEMENT
F.W.L.E.	FORCE MAIN EASEMENT

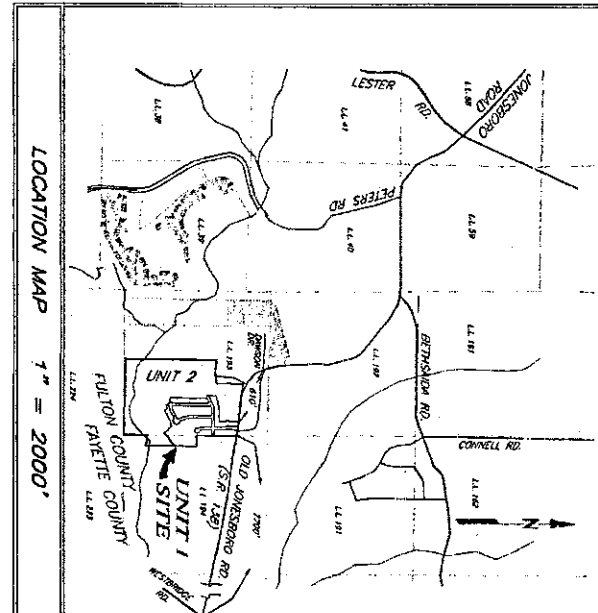
STRUCTURES LEGEND

D	HEADWALL
FLARED END SECTION (D.O.T.)	
Q	SINGLE-WING CATCH BASIN
□	DOUBLE-WING CATCH BASIN
○	WEIR INLET
○	JUNCTION BOX
○	FIRE HYDRANT



DRAWING SHEET INDEX

FINAL PLAT
FOR
AUTUMN LAKES
UNIT 1
LAND LOT 193 & 194, 13TH DISTRICT
FULTON COUNTY, GEORGIA
DATE: JAN. 26, 2005
REVISED: JAN 26, 2006



OWNER/DEVELOPER/SUBDIVIDER:
DAVID A. MOSS
AUTUMN LAKES DEVELOPMENT COMPANY
4965 PINE DRIVE - SUITE 540
SUWANEE, GEORGIA 30024
PHONE: 770-616-4708

PREPARED BY:
TATE ENGINEERING AND SURVEYING, INC.
5825-A MUBERRY STREET, S.W.
AUSTELL, GEORGIA 30168
PH: (770) 732-0270
FAX: (770) 732-0488

REVISIONS (1-26-06)

BLOCK 12 SHEET 6, CORNER LOTS 29, 31 & 33, AREA DENIED AS TULUZE PRIVATE DRIVE TO AMENITY AREA TO CREATE NEW AMENITY AREA LOT BLOCK 12, SHEETS 6 & 8, CORRECTED ERROR IN CURVE C-10 ON LOT 108 AND CORRECTED THE BUILDING LINE ON LOT 107 THAT WAS INCORRECTLY SHOWN AT 12 FT ON ORIGINAL PLAT.

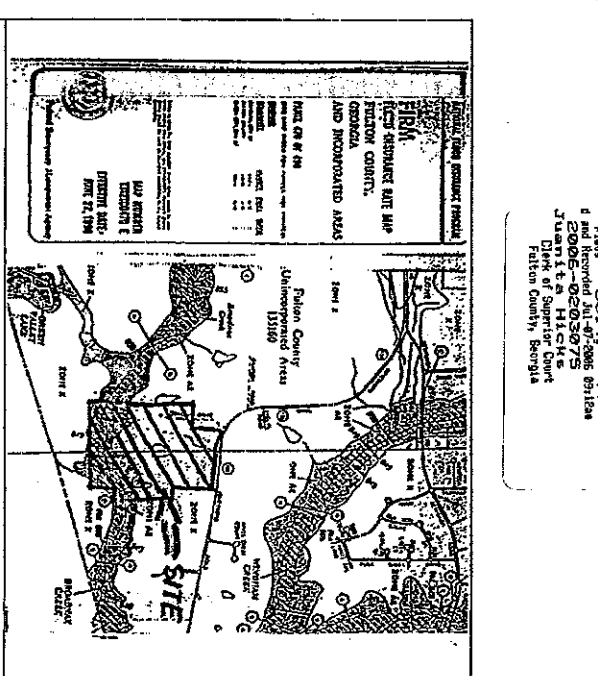
REVISION BLOCK

REVISION NUMBER: 1. THIS PLAT SUPERSEDES A PORTION OF THE PLAT RECORDED IN PLAT BOOK 270 PAGES 14-23.

THE PURPOSE OF THIS REVISION IS TO CORRECT LOTS 72, 73, AND THE AREA SHOWN AS TULUZE PRIVATE DRIVE TO AMENITY AREA TO CREATE A NEW AMENITY AREA LOT AND CORRECT DRAFTING ERRORS ON LOTS 108 AND 107.

APPROVED BY: *R. J. Hicks* DATE: **7-6-06**

FOR THE DIRECTOR, ENVIRONMENTAL AND COMMUNITY DEVELOPMENT



FRM MAP

SCALE: 1" = 1000'

ACCORDING TO THE FIRM OF FULTON COUNTY, PANEL NO. 135160 0470 E, MAP NUMBER 470 OF 490, DATED JUNE 22, 1998, A PORTION OF THIS PROPERTY IS LOCATED IN A SPECIAL FLOOD HAZARD AREA.

SURVEY NOTES:

1. THE FIELD DATA UPON WHICH THIS PLAT IS BASED WAS OBTAINED FROM THE RECORDS OF THE FULTON COUNTY ENGINEER'S OFFICE. THE ERROR OF 3 SECONDS PER ANGLE POINT AND WAS ADJUSTED USING COMPASS RULE.
2. THIS PLAT HAS BEEN CALCULATED FOR CLOSURE AND FOUND TO BE ACCURATE WITHIN ONE FOOT IN 100,000 FEET.
3. THE MEASUREMENTS FOR FIELD DATA, USED IN PREPARING THIS PLAT, WERE MADE USING A TOPCON GTS-317 READING DIRECTLY TO 5 SECONDS.

CORRECTION AS TO RECORDING THIS IF TO CERTIFY THAT THIS PLAT HAS BEEN RECORDED IN PLAT BOOK 270, PAGE 24-25 OF FULTON COUNTY RECORDS ON MARCH 21, 2005.

JUANITA HICKS
CLERK, SUPERIOR COURT
FULTON COUNTY, GEORGIA



STATE OF GEORGIA - FULTON COUNTY

OWNERS ACKNOWLEDGEMENT

THE OWNER OF RECORD OF THE LAND SHOWN ON THIS PLAT AND WHOSE NAME IS SUBSCRIBED HEREON OR THROUGH A FULLY AUTHORIZED AGENT HAS READ AND UNDERSTANDS THAT THIS PLAT WAS MADE FROM AN ACTUAL SURVEY AND KNOWLEDGES THAT THE COMPLETE OWNERSHIP AND USE OF ALL WATER AND SEWER IMPROVEMENTS CONSTRUCTED OR TO BE CONSTRUCTED IN ACCORDANCE WITH THIS PLAT AND DEDICATES TO THE USE OF THE PUBLIC FOREVER THE FOLLOWING:

PUBLIC STREETS = 4.197 ACRES
 PUBLIC SEWER EASEMENTS = 0.247 ACRES
 PUBLIC PARKS, OPEN SPACES = 2.880 ACRES

DAVID A MOSS
 TYPED NAME OF OWNER OF RECORD

DAVID A MOSS
 TYPED NAME OF OWNER OF RECORD

1/26/05
 DATE

1/26/05
 DATE

FINAL ENGINEERING CERTIFICATE

IT IS HEREBY CERTIFIED THAT THIS PLAT IS TRUE AND CORRECT AND WAS PREPARED FROM AN ACTUAL SURVEY OF THE PROPERTY MADE BY ME OR UNDER MY SUPERVISION, THAT ALL MONUMENTS SHOWN HEREON ACTUALLY EXIST OR ARE MARKED AS "TYPICAL" AND THEIR LOCATION, SIZE, TYPE AND MATERIAL ARE CORRECTLY SHOWN AND THAT ALL ENGINEERING REQUIREMENTS OF THE FULTON COUNTY SUBDIVISION REGULATIONS AND REQUIREMENTS OF THE ZONING RESOLUTION HAVE BEEN FULLY COMPLIED WITH.

BY: *Richard T. Grant*

REGISTERED CIVIL
 ENGINEER NO. 14389

DATE: 1/26/05

BY: *Richard T. Grant*

REGISTERED GEORGIA LAND
 SURVEYOR NO. 1748

DATE: 1/26/05

FINAL PLAT APPROVAL

THE DIRECTOR OF THE DEPARTMENT OF ENVIRONMENT & COMMUNITY DEVELOPMENT OF FULTON COUNTY, GEORGIA, CERTIFIES THAT THIS PLAT COMPLES WITH THE FULTON COUNTY ZONING RESOLUTION, REGULATIONS AND THE 2003 FULTON COUNTY SUBDIVISION REGULATIONS, AS AMENDED.

P. J. Wilcox

3-2-05
 DATE

FOR THE DIRECTOR, DEPARTMENT OF ENVIRONMENT & COMMUNITY DEVELOPMENT

STATEMENT OF SLOPE EASEMENT
 THIS PLAT IS APPROVED WITH THE UNDERSTANDING THAT EASEMENT IS GRANTED TO FULTON COUNTY ALONG ALL ROAD FRONTAGE FOR THE PURPOSE OF SLOPING CUTS AND FILLS AS FOLLOWS:
 0 TO 5% - NOT LESS THAN 3 TO 1 SLOPE
 5 TO 10% DEPTH - NOT LESS THAN 2 TO 1 SLOPE

LOT SUMMARY
 63 LOTS - UNIT 1

MINIMUM DESIGN STANDARDS

MINIMUM LOT SIZE = 5,000 SQ. FT.
 MINIMUM LOT BUILDING LINE = 30 FEET
 FRONT YARD: 10 FEET
 SIDE YARD: 0 FEET TO SEPARATION BETWEEN HOUSES
 SORE YARD: 20 FEET
 MAXIMUM HEIGHT: 40 FEET
 PERMETER SETBACK: 30 FEET
 ADJACENT TO NO-1 ZONED PROPERTIES

DESCRIPTION OF PROPOSED POST-DEVELOPMENT BMPs

STORMWATER FROM IMPERVIOUS AREAS WILL BE ROUTED TO DETENTION PONDS WHICH WILL SERVE AS COMBINATION WATER QUALITY AND DETENTION PONDS. STORMWATER FROM HOUSES WILL BE FILTERED BY UNDERGROUND INFILTRATION SYSTEMS AND BY RUNNING THROUGH VEGETATED BUTTER AREAS PRIOR TO THE POND.

OWNER DEVELOPER

DAVID A. MOSS
 AUTUMN LAKES DEVELOPMENT COMPANY
 4965 PINE DRIVE
 SUITE 540
 SUWANNEE, GEORGIA 30024
 PHONE: 770-616-4708

GENERAL NOTES

1. SITE IS ZONED GUP PER ZONING CASE NUMBER 20022-0036 PCS
2. OLD ADAMS ROAD APPROVED DEC. 4, 2002
3. TOTAL NUMBER OF LOTS (UNITS 1 AND 2) = 217
4. TOTAL SIZE AREA = 283,016 SQ. FT.
5. DENSITY = 0.72 UNITS/AC.
6. ALL PROPOSED STREETS SHALL BE PUBLIC.
7. WATER SERVICE TO BE PROVIDED BY CITY OF ATLANTA.
8. SANITARY SEWER SERVICE TO BE PROVIDED BY FULTON COUNTY.
9. CONCEPT PLAN APPROVAL DOES NOT CONSTITUTE APPROVAL OF THE STORMWATER MANAGEMENT SYSTEMS. NO APPROVAL OF ANY OTHER UTILITIES SHALL BE GRANTED UNTIL THE STORMWATER MANAGEMENT PLAN HAS BEEN APPROVED AND A DEVELOPMENT PERMIT IS OBTAINED.
10. PROPOSED ELECTRIC SERVICE TO BE UNDERGROUND.
11. MINIMUM HEATED FLOOR AREA = 1800 SQ. FT.
12. 2 PARKING SPACES PER UNIT
13. MAXIMUM BUILDING HEIGHT = 40'
14. BOUNDARY SURVEY BY DOWNLISON, CORRETT & ASSOCIATES, INC. DATED JUNE 6, 2001.
15. 5% SLOPE REQUIRED ON ALL DRIVEWAYS.
16. 5' SIDEWALK FOR FULTON COUNTY SPECIFICATIONS SHALL BE CONSTRUCTED ALONG ALL NEW STREETS.
17. CREEK BUTTEN AREA = 5.48 AC.
18. NO MORE THAN 242 TOTAL DWELLING UNITS AT A SINGLE DEVELOPMENT SITE. THIS DEVELOPMENT SHALL BE CONSIDERED AS A SINGLE DEVELOPMENT FOR ALL REGULATORY AND ZONING PURPOSES.
19. ALL CORNERS MARKED BY A 1/2" REBAR SET.

NOTES

FULTON COUNTY PERMITS AND/OR AGREES SHALL HAVE FREE AND TOTAL ACCESS TO AND ACROSS ALL EASEMENTS.

NOTES

1. DISTANCES SHOWN ON PLAT SHALL BE HORIZONTAL.
2. ALL PROPERTY CORNERS SHOWN MARKED WITH IRON PINS SET.

NOTE

THERE IS NO FULTON COUNTY GAS MONUMENT NEAR THE PROJECT.

FLOOD HAZARD

THE INTERMEDIATE REGIONAL FLOOD (I.R.F.) AREAS SHOWN HEREON WERE DETERMINED BY THE INTERMEDIATE REGIONAL ENGINEER WHOSE SHAPE AND SIZE ARE AS SHOWN HEREON. FULTON COUNTY DOES NOT, BY APPROVING THIS PLAT, WARRANT OR GUARANTEE THAT THE FLOODING OR FLOOD DAMAGE EITHER FULTON COUNTY DOES NOT BY APPROVING THIS PLAT NOR ACCEPTING THE PUBLIC IMPROVEMENTS THEREIN ASSUME MAINTENANCE OF THE FLOOD CARRYING CAPACITY OF THE FLOOD AREAS OR WATERCOURSES. MAINTENANCE SHALL REMAIN THE RESPONSIBILITY OF THE OWNERS OF THE LAND UPON WHICH THEY EXIST. TO SUBMIT A SITE PLAN TO FULTON COUNTY, OWNER SHALL OBTAIN THE LOCATION AND ELEVATION OF THE LOT WITHIN THE LOT OR PARCEL AND THE EXISTING AND PROPOSED IMPROVEMENTS APPROVAL OF THE SITE PLAN BY FULTON COUNTY IS REQUIRED PRIOR TO THE ASSUANCE OF A BUILDING PERMIT.

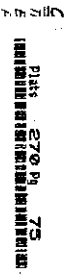
THE ENGINEER ASSUMES NO RESPONSIBILITY FOR STREAM MAINTENANCE. THE I.R.F. AREAS SHOWN HEREON ARE BASED ON THE FLOOD INSURANCE MAPS AND STREAM REMAINING CLEAR OF OBSTRUCTION. HYDRAULIC CONTROLS AND STREAM MAINTENANCE SHALL BE THE RESPONSIBILITY OF THE OWNERS.

RECOMMENDED CONDITIONS

THE RECOMMENDED CONDITIONS OF ZONING ARE AS SHOWN ON THE FOLLOWING SHEETS:

NOTES

1. THE 1/2" REBAR FOR FLOOD PLAIN LOTS SHALL BE A MINIMUM OF 3 FEET LONG.
2. THE 1/2" REBAR FOR DETENTION POND LOTS WITH A SLOPE ON GRADE SHALL BE A MINIMUM OF 1 FOOT ABOVE THE 100-YR. HIGH WATER (H.W.) ELEVATION.



DATE	1/26/05
DATE	
DATE	
DATE	

GENERAL NOTES FOR AUTUMN LAKES - UNIT 1 FULTON COUNTY, GEORGIA

LAND LOT 193 & 194 13TH DISTRICT



PREPARED BY:
TATE ENGINEERING & SURVEYING, INC.
 ENGINEERS LAND SURVEYORS
 5825-A MULBERRY STREET, S.W.
 AUSTELL, GEORGIA 30168

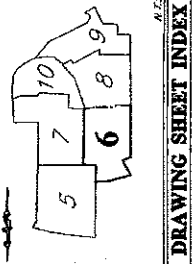
PH: 770-732-0270 FAX: 770-732-0488

PH: 770-732-0270 FAX: 770-732-0488
 5825-A MUBERRY STREET, S W
 AUSTELL, GEORGIA 30168
 PREPARED BY:
 DATE ENGINEERING & SURVEYING, INC.
 ENGINEERS LAND SURVEYORS



13TH DISTRICT
 FULTON COUNTY, GEORGIA
AUTUMN LAKES - UNIT 1
 FOR
FINAL PLAT
 LAND LOT 193 & 194

JOB NO.: 03025
 DATE: 1/26/05
 DESIGN BY:
 CHECK BY:
 DATE PRINTED:
SHT. 6 OF 10



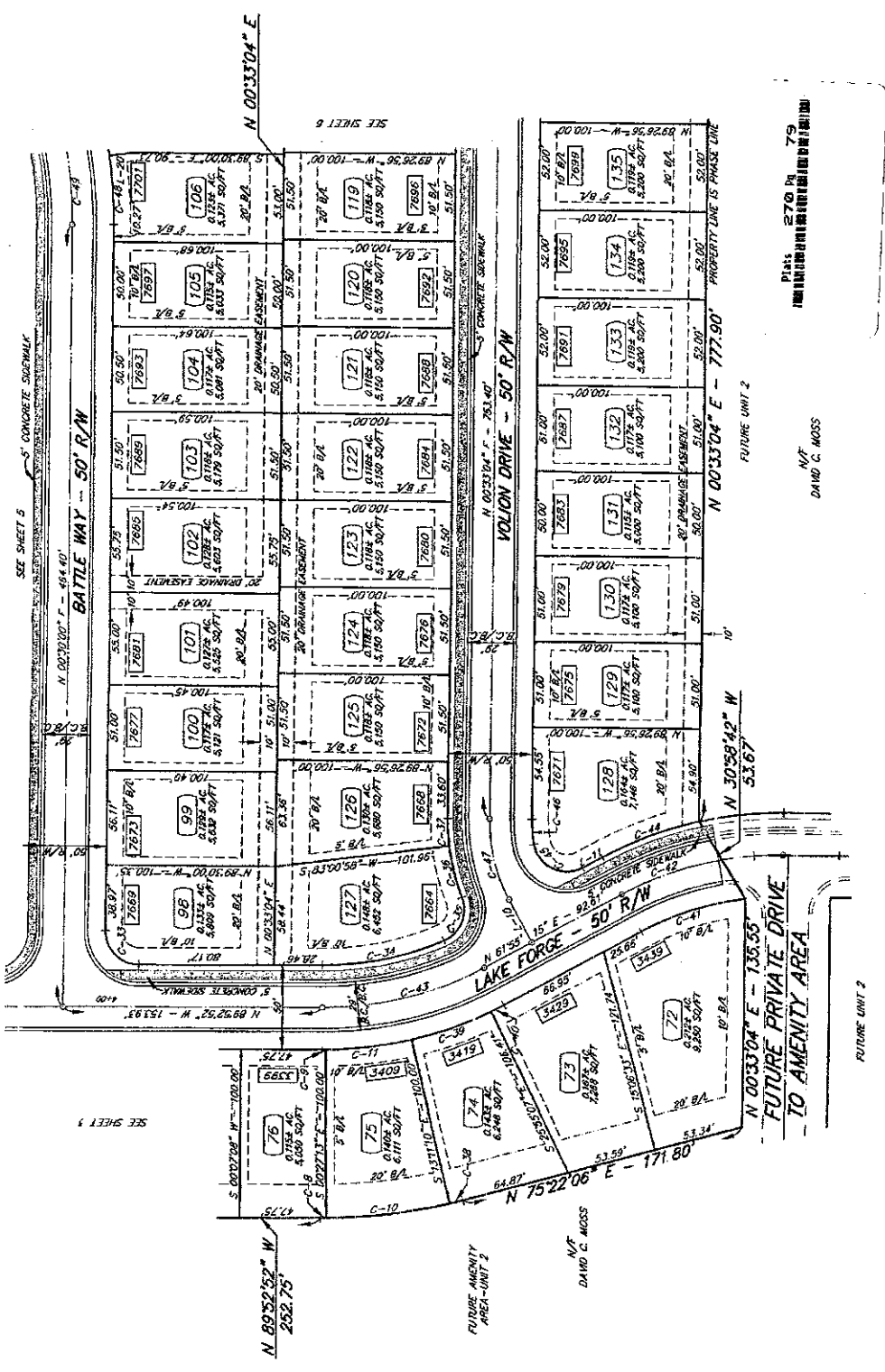
LINE DATA TABLE

LINE	BEARING	DISTANCE
L-1	S 85°52'52" W	252.75'
L-2	S 89°22'06" E	171.80'
L-3	S 15°22'06" E	171.80'
L-4	N 00°33'04" E	777.90'
L-5	N 00°33'04" E	777.90'
L-6	N 00°33'04" E	777.90'
L-7	N 00°33'04" E	777.90'
L-8	N 00°33'04" E	777.90'
L-9	N 00°33'04" E	777.90'
L-10	N 00°33'04" E	777.90'

NOTE: LINES 1-8 & 9 OMITTED

CURVE DATA TABLE

CURVE	RADIUS	ARC LENGTH	CHORD LENGTH	CHORD BEARING	DELTA ANGLE
C-1	52.00'	2.20'	2.20'	N 89°52'52" W	0.0154°
C-2	52.00'	2.20'	2.20'	N 89°52'52" W	0.0154°
C-3	52.00'	2.20'	2.20'	N 89°52'52" W	0.0154°
C-4	52.00'	2.20'	2.20'	N 89°52'52" W	0.0154°
C-5	52.00'	2.20'	2.20'	N 89°52'52" W	0.0154°
C-6	52.00'	2.20'	2.20'	N 89°52'52" W	0.0154°
C-7	52.00'	2.20'	2.20'	N 89°52'52" W	0.0154°
C-8	52.00'	2.20'	2.20'	N 89°52'52" W	0.0154°
C-9	52.00'	2.20'	2.20'	N 89°52'52" W	0.0154°
C-10	52.00'	2.20'	2.20'	N 89°52'52" W	0.0154°
C-11	52.00'	2.20'	2.20'	N 89°52'52" W	0.0154°
C-12	52.00'	2.20'	2.20'	N 89°52'52" W	0.0154°
C-13	52.00'	2.20'	2.20'	N 89°52'52" W	0.0154°
C-14	52.00'	2.20'	2.20'	N 89°52'52" W	0.0154°
C-15	52.00'	2.20'	2.20'	N 89°52'52" W	0.0154°
C-16	52.00'	2.20'	2.20'	N 89°52'52" W	0.0154°
C-17	52.00'	2.20'	2.20'	N 89°52'52" W	0.0154°
C-18	52.00'	2.20'	2.20'	N 89°52'52" W	0.0154°
C-19	52.00'	2.20'	2.20'	N 89°52'52" W	0.0154°
C-20	52.00'	2.20'	2.20'	N 89°52'52" W	0.0154°
C-21	52.00'	2.20'	2.20'	N 89°52'52" W	0.0154°
C-22	52.00'	2.20'	2.20'	N 89°52'52" W	0.0154°
C-23	52.00'	2.20'	2.20'	N 89°52'52" W	0.0154°
C-24	52.00'	2.20'	2.20'	N 89°52'52" W	0.0154°
C-25	52.00'	2.20'	2.20'	N 89°52'52" W	0.0154°
C-26	52.00'	2.20'	2.20'	N 89°52'52" W	0.0154°
C-27	52.00'	2.20'	2.20'	N 89°52'52" W	0.0154°
C-28	52.00'	2.20'	2.20'	N 89°52'52" W	0.0154°
C-29	52.00'	2.20'	2.20'	N 89°52'52" W	0.0154°
C-30	52.00'	2.20'	2.20'	N 89°52'52" W	0.0154°
C-31	52.00'	2.20'	2.20'	N 89°52'52" W	0.0154°
C-32	52.00'	2.20'	2.20'	N 89°52'52" W	0.0154°
C-33	52.00'	2.20'	2.20'	N 89°52'52" W	0.0154°
C-34	52.00'	2.20'	2.20'	N 89°52'52" W	0.0154°
C-35	52.00'	2.20'	2.20'	N 89°52'52" W	0.0154°
C-36	52.00'	2.20'	2.20'	N 89°52'52" W	0.0154°
C-37	52.00'	2.20'	2.20'	N 89°52'52" W	0.0154°
C-38	52.00'	2.20'	2.20'	N 89°52'52" W	0.0154°
C-39	52.00'	2.20'	2.20'	N 89°52'52" W	0.0154°
C-40	52.00'	2.20'	2.20'	N 89°52'52" W	0.0154°
C-41	52.00'	2.20'	2.20'	N 89°52'52" W	0.0154°
C-42	52.00'	2.20'	2.20'	N 89°52'52" W	0.0154°
C-43	52.00'	2.20'	2.20'	N 89°52'52" W	0.0154°
C-44	52.00'	2.20'	2.20'	N 89°52'52" W	0.0154°
C-45	52.00'	2.20'	2.20'	N 89°52'52" W	0.0154°
C-46	52.00'	2.20'	2.20'	N 89°52'52" W	0.0154°
C-47	52.00'	2.20'	2.20'	N 89°52'52" W	0.0154°
C-48	52.00'	2.20'	2.20'	N 89°52'52" W	0.0154°
C-49	52.00'	2.20'	2.20'	N 89°52'52" W	0.0154°
C-50	52.00'	2.20'	2.20'	N 89°52'52" W	0.0154°
C-51	52.00'	2.20'	2.20'	N 89°52'52" W	0.0154°
C-52	52.00'	2.20'	2.20'	N 89°52'52" W	0.0154°
C-53	52.00'	2.20'	2.20'	N 89°52'52" W	0.0154°
C-54	52.00'	2.20'	2.20'	N 89°52'52" W	0.0154°
C-55	52.00'	2.20'	2.20'	N 89°52'52" W	0.0154°
C-56	52.00'	2.20'	2.20'	N 89°52'52" W	0.0154°
C-57	52.00'	2.20'	2.20'	N 89°52'52" W	0.0154°
C-58	52.00'	2.20'	2.20'	N 89°52'52" W	0.0154°
C-59	52.00'	2.20'	2.20'	N 89°52'52" W	0.0154°
C-60	52.00'	2.20'	2.20'	N 89°52'52" W	0.0154°
C-61	52.00'	2.20'	2.20'	N 89°52'52" W	0.0154°
C-62	52.00'	2.20'	2.20'	N 89°52'52" W	0.0154°
C-63	52.00'	2.20'	2.20'	N 89°52'52" W	0.0154°
C-64	52.00'	2.20'	2.20'	N 89°52'52" W	0.0154°
C-65	52.00'	2.20'	2.20'	N 89°52'52" W	0.0154°
C-66	52.00'	2.20'	2.20'	N 89°52'52" W	0.0154°
C-67	52.00'	2.20'	2.20'	N 89°52'52" W	0.0154°
C-68	52.00'	2.20'	2.20'	N 89°52'52" W	0.0154°
C-69	52.00'	2.20'	2.20'	N 89°52'52" W	0.0154°
C-70	52.00'	2.20'	2.20'	N 89°52'52" W	0.0154°
C-71	52.00'	2.20'	2.20'	N 89°52'52" W	0.0154°
C-72	52.00'	2.20'	2.20'	N 89°52'52" W	0.0154°
C-73	52.00'	2.20'	2.20'	N 89°52'52" W	0.0154°
C-74	52.00'	2.20'	2.20'	N 89°52'52" W	0.0154°
C-75	52.00'	2.20'	2.20'	N 89°52'52" W	0.0154°
C-76	52.00'	2.20'	2.20'	N 89°52'52" W	0.0154°
C-77	52.00'	2.20'	2.20'	N 89°52'52" W	0.0154°
C-78	52.00'	2.20'	2.20'	N 89°52'52" W	0.0154°
C-79	52.00'	2.20'	2.20'	N 89°52'52" W	0.0154°
C-80	52.00'	2.20'	2.20'	N 89°52'52" W	0.0154°
C-81	52.00'	2.20'	2.20'	N 89°52'52" W	0.0154°
C-82	52.00'	2.20'	2.20'	N 89°52'52" W	0.0154°
C-83	52.00'	2.20'	2.20'	N 89°52'52" W	0.0154°
C-84	52.00'	2.20'	2.20'	N 89°52'52" W	0.0154°
C-85	52.00'	2.20'	2.20'	N 89°52'52" W	0.0154°
C-86	52.00'	2.20'	2.20'	N 89°52'52" W	0.0154°
C-87	52.00'	2.20'	2.20'	N 89°52'52" W	0.0154°
C-88	52.00'	2.20'	2.20'	N 89°52'52" W	0.0154°
C-89	52.00'	2.20'	2.20'	N 89°52'52" W	0.0154°
C-90	52.00'	2.20'	2.20'	N 89°52'52" W	0.0154°
C-91	52.00'	2.20'	2.20'	N 89°52'52" W	0.0154°
C-92	52.00'	2.20'	2.20'	N 89°52'52" W	0.0154°
C-93	52.00'	2.20'	2.20'	N 89°52'52" W	0.0154°
C-94	52.00'	2.20'	2.20'	N 89°52'52" W	0.0154°
C-95	52.00'	2.20'	2.20'	N 89°52'52" W	0.0154°
C-96	52.00'	2.20'	2.20'	N 89°52'52" W	0.0154°
C-97	52.00'	2.20'	2.20'	N 89°52'52" W	0.0154°
C-98	52.00'	2.20'	2.20'	N 89°52'52" W	0.0154°
C-99	52.00'	2.20'	2.20'	N 89°52'52" W	0.0154°
C-100	52.00'	2.20'	2.20'	N 89°52'52" W	0.0154°



Plat 270 M 79
 N/T
 DAVID C. MOSS

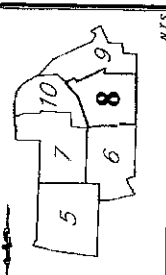
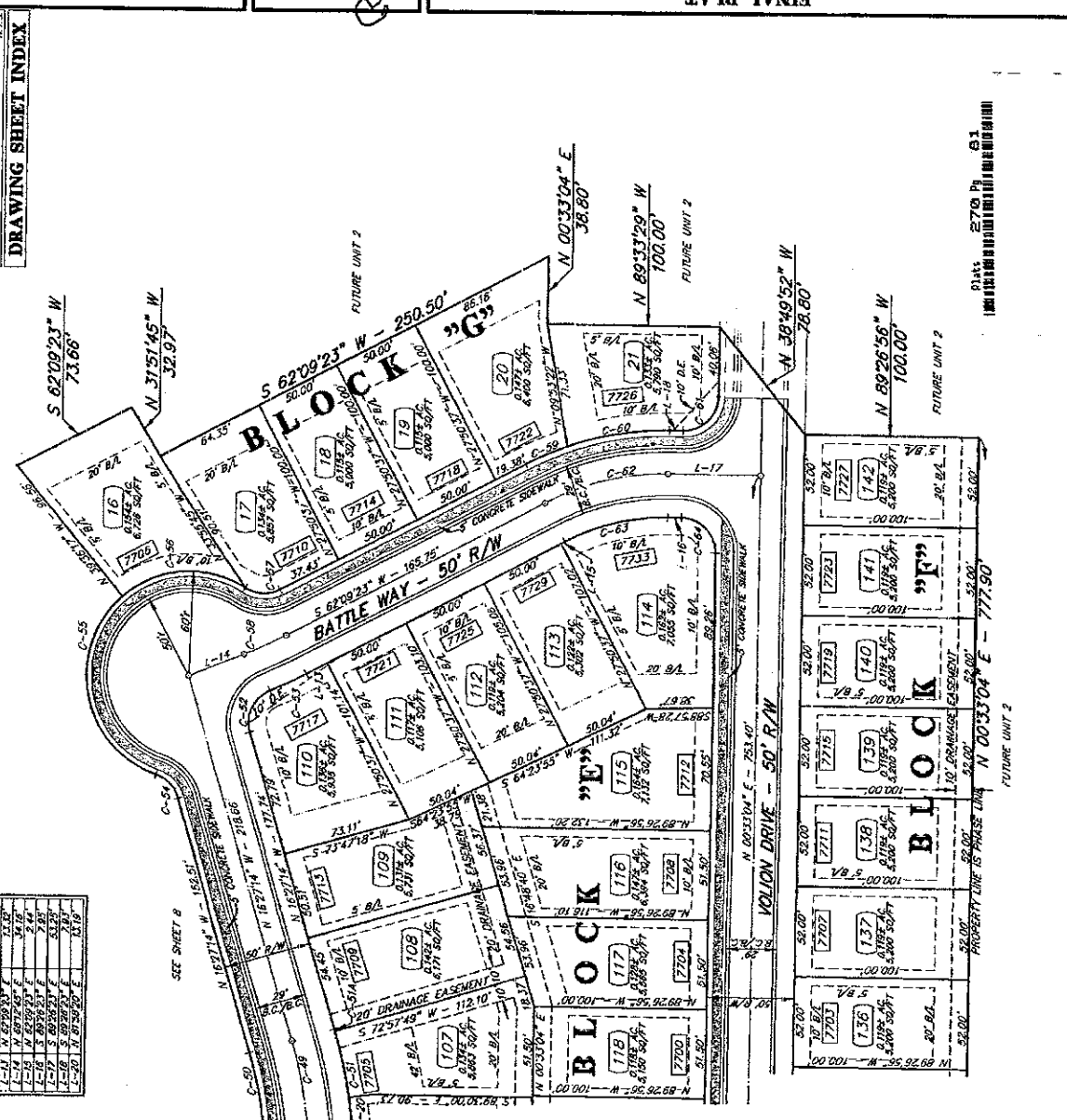
NOTE:
 1. ALL AREAS DESIGNATED (C.A.) SHALL BE OWNED AND MAINTAINED BY THE HOMEOWNERS ASSOCIATION IN PERPETUITY.
 2. MINIMUM ONE 2 INCH CALIPER OR LARGER TREE WILL BE PLANTED IN FRONT YARDS OF ALL HOMES.



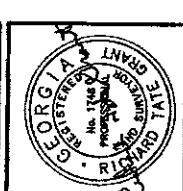


CURVE	RADIUS	ARC LENGTH	CHORD LENGTH	CHORD BEARING	DELTA ANGLE
C-49	250.00	21.97	21.97	N 07°56'37" W	18°57'14"
C-50	250.00	65.50	65.50	N 07°56'37" W	18°57'14"
C-51	250.00	109.03	109.03	N 07°56'37" W	18°57'14"
C-52	250.00	152.56	152.56	N 07°56'37" W	18°57'14"
C-53	250.00	196.09	196.09	N 07°56'37" W	18°57'14"
C-54	250.00	239.62	239.62	N 07°56'37" W	18°57'14"
C-55	250.00	283.15	283.15	N 07°56'37" W	18°57'14"
C-56	250.00	326.68	326.68	N 07°56'37" W	18°57'14"
C-57	250.00	370.21	370.21	N 07°56'37" W	18°57'14"
C-58	250.00	413.74	413.74	N 07°56'37" W	18°57'14"
C-59	250.00	457.27	457.27	N 07°56'37" W	18°57'14"
C-60	250.00	500.80	500.80	N 07°56'37" W	18°57'14"
C-61	250.00	544.33	544.33	N 07°56'37" W	18°57'14"
C-62	250.00	587.86	587.86	N 07°56'37" W	18°57'14"
C-63	250.00	631.39	631.39	N 07°56'37" W	18°57'14"
C-64	250.00	674.92	674.92	N 07°56'37" W	18°57'14"
C-65	250.00	718.45	718.45	N 07°56'37" W	18°57'14"
C-66	250.00	761.98	761.98	N 07°56'37" W	18°57'14"
C-67	250.00	805.51	805.51	N 07°56'37" W	18°57'14"
C-68	250.00	849.04	849.04	N 07°56'37" W	18°57'14"
C-69	250.00	892.57	892.57	N 07°56'37" W	18°57'14"
C-70	250.00	936.10	936.10	N 07°56'37" W	18°57'14"
C-71	250.00	979.63	979.63	N 07°56'37" W	18°57'14"
C-72	250.00	1023.16	1023.16	N 07°56'37" W	18°57'14"
C-73	250.00	1066.69	1066.69	N 07°56'37" W	18°57'14"
C-74	250.00	1110.22	1110.22	N 07°56'37" W	18°57'14"
C-75	250.00	1153.75	1153.75	N 07°56'37" W	18°57'14"
C-76	250.00	1197.28	1197.28	N 07°56'37" W	18°57'14"
C-77	250.00	1240.81	1240.81	N 07°56'37" W	18°57'14"
C-78	250.00	1284.34	1284.34	N 07°56'37" W	18°57'14"
C-79	250.00	1327.87	1327.87	N 07°56'37" W	18°57'14"
C-80	250.00	1371.40	1371.40	N 07°56'37" W	18°57'14"
C-81	250.00	1414.93	1414.93	N 07°56'37" W	18°57'14"
C-82	250.00	1458.46	1458.46	N 07°56'37" W	18°57'14"
C-83	250.00	1501.99	1501.99	N 07°56'37" W	18°57'14"
C-84	250.00	1545.52	1545.52	N 07°56'37" W	18°57'14"
C-85	250.00	1589.05	1589.05	N 07°56'37" W	18°57'14"
C-86	250.00	1632.58	1632.58	N 07°56'37" W	18°57'14"
C-87	250.00	1676.11	1676.11	N 07°56'37" W	18°57'14"
C-88	250.00	1719.64	1719.64	N 07°56'37" W	18°57'14"
C-89	250.00	1763.17	1763.17	N 07°56'37" W	18°57'14"
C-90	250.00	1806.70	1806.70	N 07°56'37" W	18°57'14"
C-91	250.00	1850.23	1850.23	N 07°56'37" W	18°57'14"
C-92	250.00	1893.76	1893.76	N 07°56'37" W	18°57'14"
C-93	250.00	1937.29	1937.29	N 07°56'37" W	18°57'14"
C-94	250.00	1980.82	1980.82	N 07°56'37" W	18°57'14"
C-95	250.00	2024.35	2024.35	N 07°56'37" W	18°57'14"
C-96	250.00	2067.88	2067.88	N 07°56'37" W	18°57'14"
C-97	250.00	2111.41	2111.41	N 07°56'37" W	18°57'14"
C-98	250.00	2154.94	2154.94	N 07°56'37" W	18°57'14"
C-99	250.00	2198.47	2198.47	N 07°56'37" W	18°57'14"
C-100	250.00	2242.00	2242.00	N 07°56'37" W	18°57'14"

LINE	BEARING	LENGTH
L-1	N 89°31'29" W	100.00
L-2	N 89°31'29" W	100.00
L-3	N 89°31'29" W	100.00
L-4	N 89°31'29" W	100.00
L-5	N 89°31'29" W	100.00
L-6	N 89°31'29" W	100.00
L-7	N 89°31'29" W	100.00
L-8	N 89°31'29" W	100.00
L-9	N 89°31'29" W	100.00
L-10	N 89°31'29" W	100.00

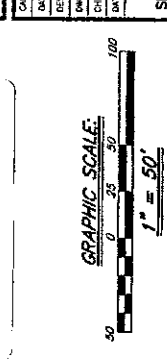


PREPARED BY: TATE ENGINEERING & SURVEYING, INC.
 ENGINEERS LAND SURVEYORS
 5825-A MULBERRY STREET, S W
 AUSTELL, GEORGIA 30168
 PH: 770-732-0270 FAX: 770-732-0488



FINAL PLAN FOR
AUTUMN LAKES - UNIT 1
 FULTON COUNTY, GEORGIA
 13TH DISTRICT
 LAND LOT 193 & 194

CAD FILE: 03025
 DATE: 1/26/05
 DRAWN BY:
 CHECK BY:
 DATE PRINTED:
 SHT. 8 of 10



NOTE:
 1. ALL AREAS DESIGNATED (C.A.) SHALL BE OWNED AND MAINTAINED BY THE HOMEOWNERS ASSOCIATION IN PERPETUITY.
 2. MINIMUM ONE 2 INCH CALIBER OR LARGER TREE WILL BE PLANTED IN FRONT YARDS OF ALL HOMES