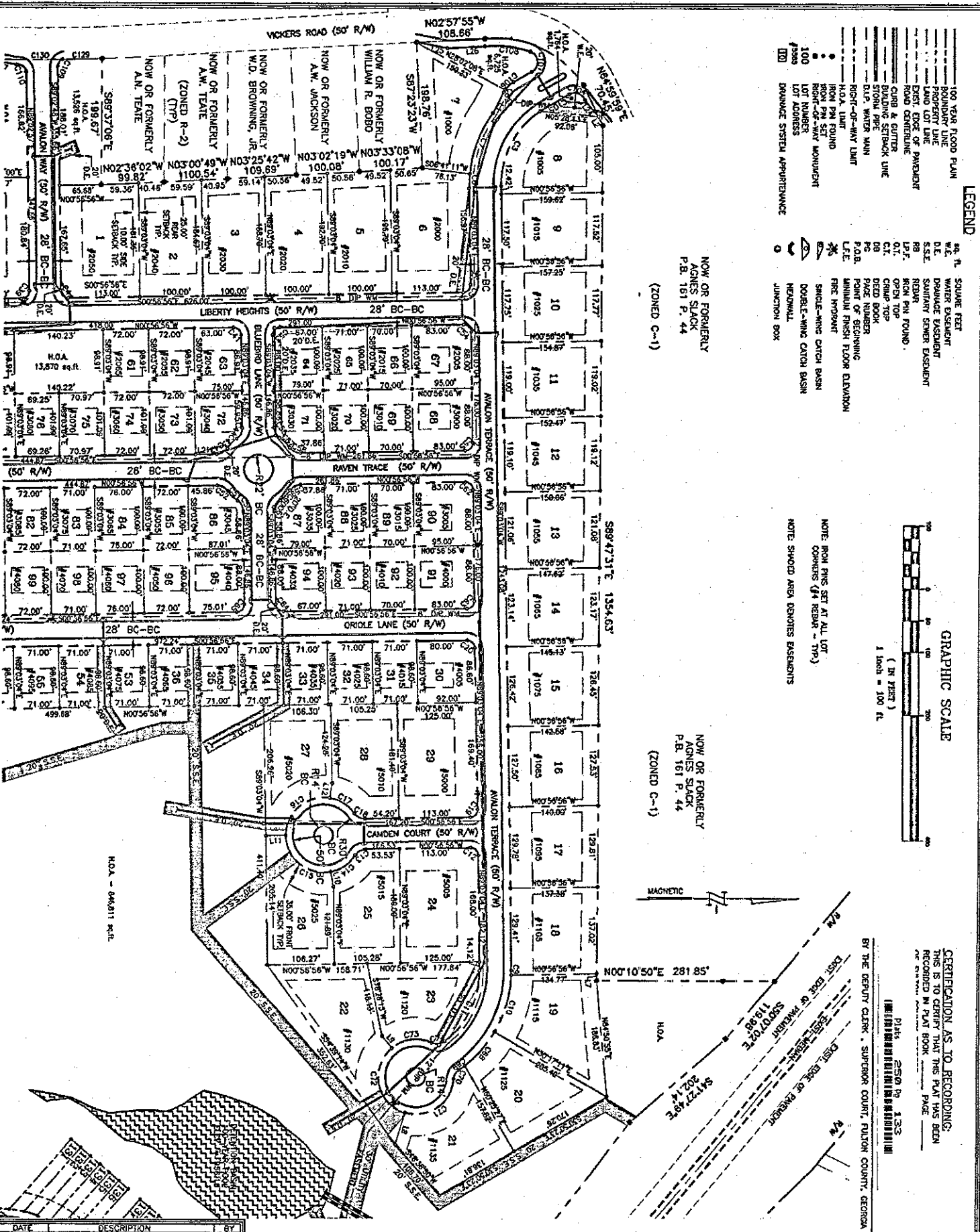


CURVE	LENGTH	RADIUS	CHORD BEARING	CHORD LENGTH
C1	260.21	3360.00	N0710.04W	209.19
C2	181.95	191.41	S8220.52E	172.16
C3	159.19	140.00	S8220.52E	133.55
C4	18.95	12.00	N4303.92E	16.97
C5	18.95	12.00	N4303.92E	16.97
C6	20.04	192.00	S8220.52E	20.04
C7	105.44	91.94	S8220.52E	89.27
C8	2.08	13.00	S8220.52E	2.08
C9	18.95	12.00	N4303.92E	16.97
C10	18.95	12.00	N4303.92E	16.97
C11	18.95	12.00	N4303.92E	16.97
C12	18.95	12.00	N4303.92E	16.97
C13	18.95	12.00	N4303.92E	16.97
C14	18.95	12.00	N4303.92E	16.97
C15	105.44	91.94	S8220.52E	89.27
C16	48.27	60.00	N4303.92E	48.27
C17	47.35	60.00	N4303.92E	47.35
C18	19.37	20.00	N4303.92E	19.37
C19	18.95	12.00	N4303.92E	16.97
C20	18.95	12.00	N4303.92E	16.97
C21	18.95	12.00	N4303.92E	16.97
C22	18.95	12.00	N4303.92E	16.97
C23	102.45	12.00	N4303.92E	102.45
C24	18.95	12.00	N4303.92E	16.97
C25	18.95	12.00	N4303.92E	16.97
C26	18.95	12.00	N4303.92E	16.97
C27	18.95	12.00	N4303.92E	16.97
C28	23.00	19.00	S0273.91E	23.00
C29	18.95	12.00	N4303.92E	16.97
C30	18.95	12.00	N4303.92E	16.97
C31	18.95	12.00	N4303.92E	16.97
C32	18.95	12.00	N4303.92E	16.97
C33	75.24	19.00	S8220.52E	75.24
C34	25.66	19.00	S8220.52E	25.66
C35	25.66	19.00	S8220.52E	25.66
C36	18.95	12.00	N4303.92E	16.97
C37	85.47	19.00	S8220.52E	85.47
C38	23.00	19.00	S0273.91E	23.00
C39	18.95	12.00	N4303.92E	16.97
C40	18.95	12.00	N4303.92E	16.97
C41	18.95	12.00	N4303.92E	16.97
C42	18.95	12.00	N4303.92E	16.97
C43	22.46	20.00	N6711.61E	22.46
C44	18.95	12.00	N4303.92E	16.97
C45	18.95	12.00	N4303.92E	16.97
C46	18.95	12.00	N4303.92E	16.97
C47	18.95	12.00	N4303.92E	16.97
C48	18.95	12.00	N4303.92E	16.97
C49	18.95	12.00	N4303.92E	16.97
C50	18.95	12.00	N4303.92E	16.97
C51	22.46	20.00	N6711.61E	22.46
C52	18.95	12.00	N4303.92E	16.97
C53	18.95	12.00	N4303.92E	16.97
C54	18.95	12.00	N4303.92E	16.97
C55	18.95	12.00	N4303.92E	16.97
C56	18.95	12.00	N4303.92E	16.97
C57	18.95	12.00	N4303.92E	16.97
C58	18.95	12.00	N4303.92E	16.97
C59	18.95	12.00	N4303.92E	16.97
C60	18.95	12.00	N4303.92E	16.97
C61	18.95	12.00	N4303.92E	16.97
C62	18.95	12.00	N4303.92E	16.97
C63	18.95	12.00	N4303.92E	16.97
C64	18.95	12.00	N4303.92E	16.97
C65	18.95	12.00	N4303.92E	16.97
C66	18.95	12.00	N4303.92E	16.97
C67	23.71	140.00	N05140.93E	23.71
C68	11.93	190.00	N4303.92E	11.93
C69	18.95	12.00	N4303.92E	16.97
C70	18.95	12.00	N4303.92E	16.97
C71	107.88	86.00	N4303.92E	93.97
C72	179.85	68.00	N4303.92E	162.86
C73	61.28	68.00	N4303.92E	61.28
C74	21.72	120.00	N4303.92E	21.72
C75	20.46	125.00	N4303.92E	20.46
C76	20.46	125.00	N4303.92E	20.46
C77	20.46	125.00	N4303.92E	20.46
C78	20.46	125.00	N4303.92E	20.46
C79	20.46	125.00	N4303.92E	20.46
C80	20.46	125.00	N4303.92E	20.46
C81	20.46	125.00	N4303.92E	20.46
C82	20.46	125.00	N4303.92E	20.46
C83	20.46	125.00	N4303.92E	20.46
C84	20.46	125.00	N4303.92E	20.46
C85	20.46	125.00	N4303.92E	20.46
C86	20.46	125.00	N4303.92E	20.46
C87	20.46	125.00	N4303.92E	20.46
C88	20.46	125.00	N4303.92E	20.46
C89	20.46	125.00	N4303.92E	20.46
C90	20.46	125.00	N4303.92E	20.46

CURVE	LENGTH	RADIUS	CHORD BEARING	CHORD LENGTH
C91	23.90	175.00	S0818.30W	23.90
C92	20.94	175.00	S1648.18W	20.94
C93	20.94	175.00	S1648.18W	20.94
C94	20.94	175.00	S1648.18W	20.94
C95	20.94	175.00	S1648.18W	20.94
C96	20.94	175.00	S1648.18W	20.94
C97	20.94	175.00	S1648.18W	20.94
C98	20.94	175.00	S1648.18W	20.94
C99	20.94	175.00	S1648.18W	20.94
C100	20.94	175.00	S1648.18W	20.94
C101	20.94	175.00	S1648.18W	20.94
C102	20.94	175.00	S1648.18W	20.94
C103	20.94	175.00	S1648.18W	20.94
C104	20.94	175.00	S1648.18W	20.94
C105	20.94	175.00	S1648.18W	20.94
C106	20.94	175.00	S1648.18W	20.94
C107	20.94	175.00	S1648.18W	20.94
C108	20.94	175.00	S1648.18W	20.94
C109	20.94	175.00	S1648.18W	20.94
C110	20.94	175.00	S1648.18W	20.94
C111	20.94	175.00	S1648.18W	20.94
C112	20.94	175.00	S1648.18W	20.94
C113	20.94	175.00	S1648.18W	20.94
C114	20.94	175.00	S1648.18W	20.94
C115	20.94	175.00	S1648.18W	20.94
C116	20.94	175.00	S1648.18W	20.94
C117	20.94	175.00	S1648.18W	20.94
C118	20.94	175.00	S1648.18W	20.94
C119	20.94	175.00	S1648.18W	20.94
C120	20.94	175.00	S1648.18W	20.94
C121	20.94	175.00	S1648.18W	20.94
C122	20.94	175.00	S1648.18W	20.94
C123	20.94	175.00	S1648.18W	20.94
C124	20.94	175.00	S1648.18W	20.94
C125	20.94	175.00	S1648.18W	20.94
C126	20.94	175.00	S1648.18W	20.94
C127	20.94	175.00	S1648.18W	20.94
C128	20.94	175.00	S1648.18W	20.94
C129	20.94	175.00	S1648.18W	20.94
C130	20.94	175.00	S1648.18W	20.94
C131	20.94	175.00	S1648.18W	20.94
C132	20.94	175.00	S1648.18W	20.94
C133	20.94	175.00	S1648.18W	20.94
C134	20.94	175.00	S1648.18W	20.94
C135	20.94	175.00	S1648.18W	20.94
C136	20.94	175.00	S1648.18W	20.94
C137	20.94	175.00	S1648.18W	20.94
C138	20.94	175.00	S1648.18W	20.94
C139	20.94	175.00	S1648.18W	20.94
C140	20.94	175.00	S1648.18W	20.94
C141	20.94	175.00	S1648.18W	20.94
C142	20.94	175.00	S1648.18W	20.94
C143	20.94	175.00	S1648.18W	20.94
C144	20.94	175.00	S1648.18W	20.94
C145	20.94	175.00	S1648.18W	20.94
C146	20.94	175.00	S1648.18W	20.94
C147	20.94	175.00	S1648.18W	20.94
C148	20.94	175.00	S1648.18W	20.94
C149	20.94	175.00	S1648.18W	20.94
C150	20.94	175.00	S1648.18W	20.94
C151	20.94	175.00	S1648.18W	20.94
C152	20.94	175.00	S1648.18W	20.94
C153	20.94	175.00	S1648.18W	20.94
C154	20.94	175.00	S1648.18W	20.94
C155	20.94	175.00	S1648.18W	20.94
C156	20.94	175.00	S1648.18W	20.94
C157	20.94	175.00	S1648.18W	20.94
C158	20.94	175.00	S1648.18W	20.94
C159	20.94	175.00	S1648.18W	20.94
C160	20.94	175.00	S1648.18W	20.94
C161	20.94	175.00	S1648.18W	20.94
C162	20.94	175.00	S1648.18W	20.94
C163	20.94	175.00	S1648.18W	20.94
C164	20.94	175.00	S1648.18W	20.94
C165	20.94	175.00	S1648.18W	20.94
C166	20.94	175.00	S1648.18W	20.94
C167	20.94	175.00	S1648.18W	20.94
C168	20.94	175.00	S1648.18W	20.94
C169	20.94	175.00	S1648.18W	20.94
C170	20.94	175.00	S1648.18W	20.94
C171	20.94	175.00	S1648.18W	20.94
C172	20.94	175.00	S1648.18W	20.94
C173	20.94	175.00	S1648.18W	20.94
C174	20.94	175.00	S1648.18W	20.94
C175	20.94	175.00	S1648.18W	20.94
C176	20.94	175.00	S1648.18W	20.94
C177	20.94	175.00	S1648.18W	20.94
C178	20.94	175.00	S1648.18W	20.94
C179	20.94	175.00	S1648.18W	20.94
C180	20.94	175.00	S1648.18W	20.94
C181	20.94	175.00	S1648.18W	20.94
C182	20.94	175.00	S1648.18W	20.94
C183	20.94	175.00	S1648.18W	20.94
C184	20.94	175.00	S1648.18W	20.94
C185	20.94	175.00	S1648.18W	20.94
C186	20.94	175.00	S1648.18W	20.94
C187	20.94	175.00	S1648.18W	20.94
C188	20.94	175.00	S1648.18W	20.94
C189	20.94	175.00	S1648.18W	20.94
C190	20.94	175.00	S1648.18W	20.94
C191	20.94	175.00	S1648.18W	20.94
C192	20.94	175.00	S1648.18W	20.94
C193	20.94	175.00	S1648.18W	20.94
C194	20.94	175.00	S1648.18W	20.94
C195	20.94	175.00	S1648.18W	20.94
C196	20.94	175.00	S1648.18W	20.94
C197	20.94	175.00	S1648.18W	20.94
C198	20.94	175.00	S1648.18W	20.94
C199	20.94	175.00	S1648.18W	20.94
C200	20.94	175.00	S1648.18W	20.94

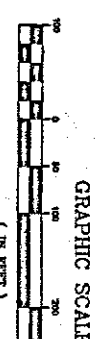
LINE	LENGTH	BEARING
L1	53.97	S6223.42E
L2	13.94	N6429.21E
L3	11.12	S7224.52E
L4	63.76	S8220.52E
L5	19.23	N7224.52E
L6	23.91	S8220.52E
L7	11.35	N7224.52E
L8	23.92	N8220.52E
L9	13.08	N7224.52E
L10	43.08	N8220.52E
L11	32.81	N8220.52E
L12	47.92	N8220.52E
L13	47.92	N8220.52E
L14	47.92	N8220.52E
L15	47.92	N8220.52E
L16	47.92	N8220.52E
L17	47.92	N8220.52E
L18	47.92	N8220.52E
L19	47.92	N8220.52E
L20	47.92	N8220.52E
L21	47.92	N8220.52E
L22	47.92	N8220.52E
L23	47.92	N8220.52E
L24	47.92	N8

© 2003 ASHFORD ENGINEERS, INC.



LEGEND

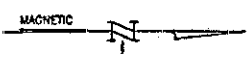
- 100 YEAR FLOOD PLUM
- BOUNDARY LINE
- PROPERTY LINE
- LAND LOT LINE
- EXIST. EDGE OF PAVEMENT
- ROAD CENTERLINE
- CURB & GUTTER
- BOUNDARY SETBACK LINE
- SLIP WATER MAIN
- RIGHT-OF-WAY LIMIT
- MAX. LIMIT
- IRON PIN SET
- RIGHT-OF-WAY MONUMENT
- LOT NUMBER
- LOT ADDRESS
- DRAINAGE SYSTEM APPEARANCE
- sq. ft.
- WATER ESCAPEMENT
- DRAINAGE ESCAPEMENT
- S.S.E. SAUNTING SINKER ESCAPEMENT
- REBAR
- IRON PIN FOUND
- OPEN TOP
- DRIVE POLE
- PAGE NUMBER
- POINT OF BEGINNING
- MINIMUM FINISH FLOOR ELEVATION
- FIRE HYDRANT
- SINGLE-WING CATCH BASIN
- DOUBLE-WING CATCH BASIN
- HEADWALL
- JUNCTION BOX



NOTE: IRON PINS SET AT ALL LOT CORNERS (44 REBAR - TYP.)
NOTE: SHADY AREA DENOTES ESCAPEMENTS

NOW OR FORMERLY
AGNES SLACK
P.B. 161 P. 44
(ZONED C-1)

NOW OR FORMERLY
AGNES SLACK
P.B. 161 P. 44
(ZONED C-1)



CERTIFICATION AS TO RECORDING:
THIS IS TO CERTIFY THAT THE PLAT HAS BEEN
RECORDED IN PLAT BOOK PAGE
Plat 2509 P. 133
BY THE DEPUTY CLERK, SUPERIOR COURT, FULTON COUNTY, GEORGIA

ashford engineers, inc.
2233 Lake Park Drive, Suite 270
Smyrna, Georgia 30080-8856
Tel. (770) 435-2733 Fax. (770) 435-7639
civil engineers - land planning - development services

SURVEY BY KEN NUTT, LLC

ACTIVITY	NAME
DESIGNED BY:	C. SHANNON
DRAWN BY:	C. SHANNON
CHECKED BY:	R. GALPIN
APPROVED BY:	K. NUTT
REGISTRATION NO.:	GA_2104

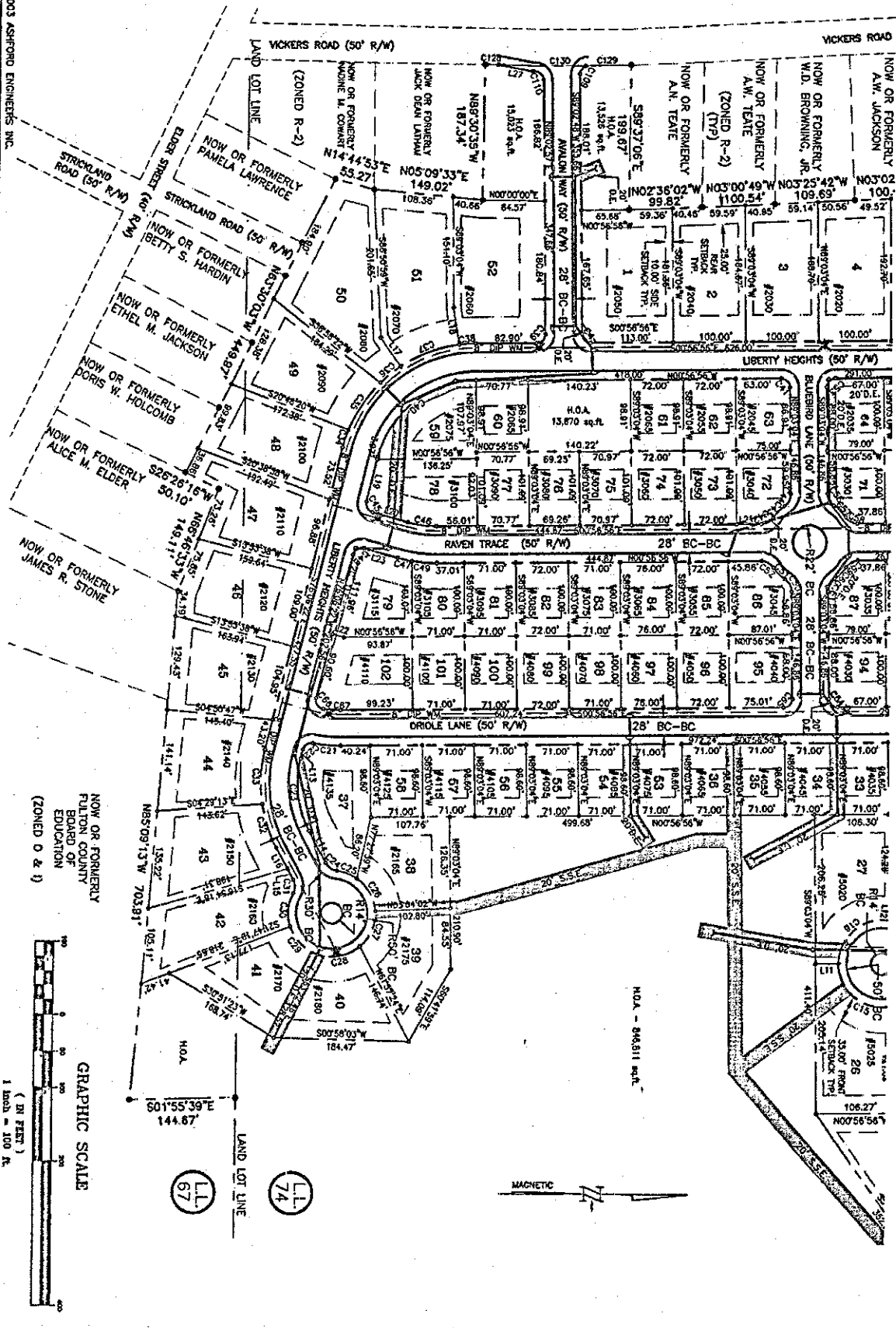
SCALE: 1"=100'
DATE: 09-09-03
JOB NO. C-6043

AVALON SUBDIVISION
LAND LOT 67, 74 & 75, 8TH DISTRICT P,
CITY OF FAIRBURN, FULTON COUNTY, GEORGIA

FINAL PLAT
SHEET 5 of 8

© 2003 ASHFORD ENGINEERS INC.

- LEGEND**
- 100 YEAR FLOOD PLAIN
 - ROOF PIN LINE
 - LAND LOT LINE
 - EXIST. EDGE OF PAVEMENT
 - ROAD CENTERLINE
 - CLUB & GUTTER
 - BUILDING SETBACK LINE
 - STAIR PPE
 - D.L.P. WATER MAIN
 - RIGHT-OF-WAY LIMIT
 - H.O.A. LIMIT
 - IRON PIN FOUND
 - ROOF PIN FOUND
 - RIGHT-OF-WAY MONUMENT
 - 100 LOT NUMBER
 - 100 LOT ADDRESS
 - DRAINAGE SETBACK APPEARANCE
- sq. ft. SQUARE FEET
 - W.E. WATER EASEMENT
 - P.E. PRORATE EASEMENT
 - S.S.E. SANITARY SEWER EASEMENT
 - R.B. REAR
 - R.P. IRON PIN FOUND
 - L.P. LEAN
 - O.T. OPEN TOP
 - D.B. DEED BOOK
 - P.O.B. POINT OF BEGINNING
 - L.F.Z. MINIMUM FINISH FLOOR ELEVATION
 - FIRE HYDRANT
 - SINGLE-WING CATCH BASIN
 - DOUBLE-WING CATCH BASIN
 - HEADWALL
 - JUNCTION BOX



NOTE: IRON PINS SET AT ALL LOT CORNERS (14 REAR - TR.)

NOTE: SHADED AREA DENOTES EASEMENTS

CERTIFICATION AS TO RECORDING:
 THIS IS TO CERTIFY THAT THIS PLAT HAS BEEN RECORDED IN PLAT BOOK _____ PAGE _____ OF FULTON COUNTY RECORDS, ON _____
 2:50 P.M. 134
 BY THE DEPUTY CLERK, SUPERIOR COURT, FULTON COUNTY, GEORGIA

ashford engineers, inc
 2233 Lake Park Drive, Suite 270
 Smyrna, Georgia 30080-8558
 Tel. (770) 435-2733 Fax. (770) 435-7839
 civil engineers - land planning - development services

SURVEY BY KEN NUTT, LLC

NO.	DATE	DESCRIPTION	BY

ACTIVITY	NAME
DESIGNED BY:	C. SHANNON
DRAWN BY:	C. SHANNON
CHECKED BY:	R. CALPIN
APPROVED BY:	K. NUTT
REGISTRATION NO.	BA 2104

SCALE: 1"=100'
 DATE: 09-09-03
 JOB NO. C-6043

AVALON SUBDIVISION
 LAND LOT 67, 74 & 75, 9TH DISTRICT P, CITY OF FARMERSBUR, FULTON COUNTY, GEORGIA

FINAL PLAT

SHEET 6
 5
 8